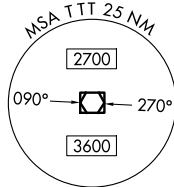


JOE POOL EIGHT DEPARTURE

LONE STAR DEP CON
135.975 379.9
ATIS
120.7
CLNC DEL
124.65
GND CON
121.9
MEACHAM TOWER
118.3 257.8

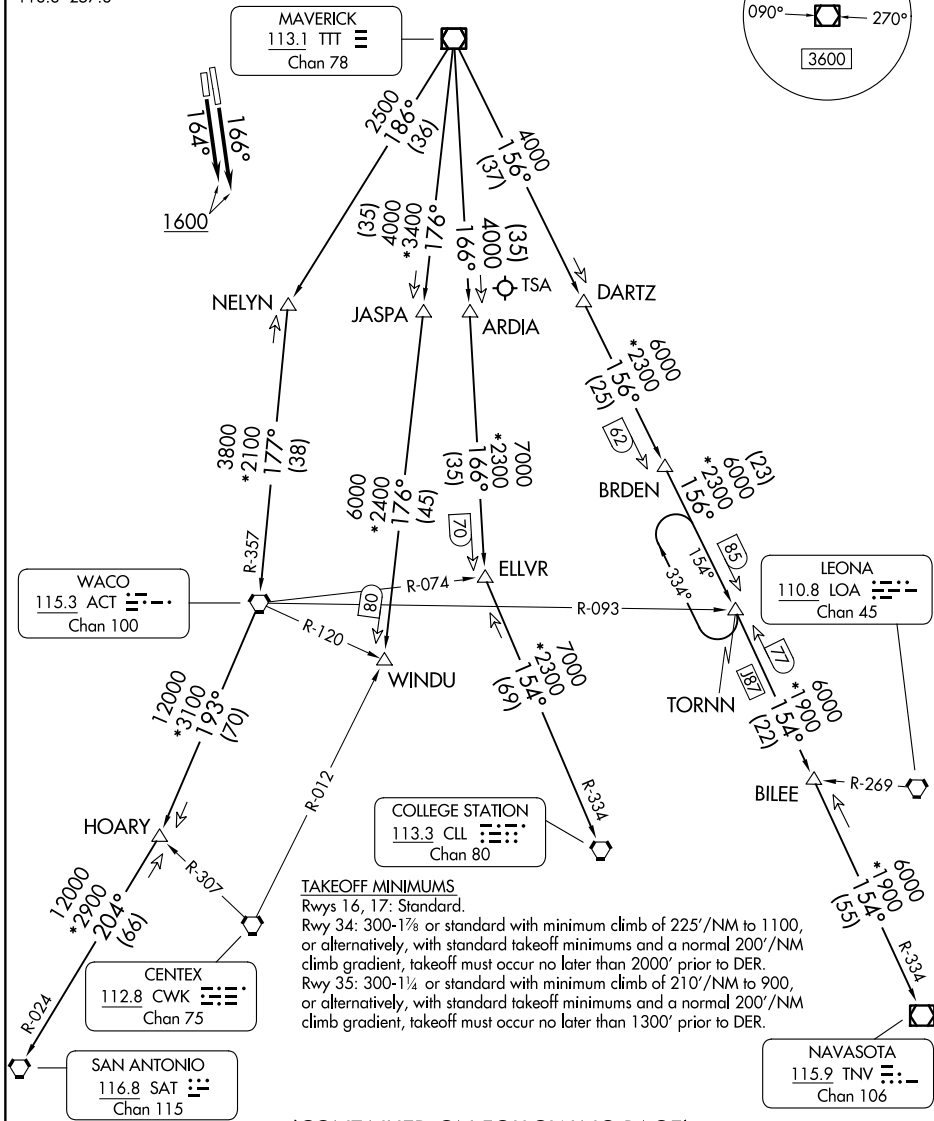
RADAR and DME required.

**TOP ALTITUDE:
ASSIGNED BY ATC**



SC-2, 16 APR 2026 to 14 MAY 2026

SC-2, 16 APR 2026 to 14 MAY 2026



TAKEOFF MINIMUMS
Rwys 16, 17: Standard.
Rwy 34: 300-1½ or standard with minimum climb of 225'/NM to 1100, or alternatively, with standard takeoff minimums and a normal 200'/NM climb gradient, takeoff must occur no later than 2000' prior to DER.
Rwy 35: 300-1¼ or standard with minimum climb of 210'/NM to 900, or alternatively, with standard takeoff minimums and a normal 200'/NM climb gradient, takeoff must occur no later than 1300' prior to DER.

(CONTINUED ON FOLLOWING PAGE) NOTE: Chart not to scale.

JOE POOL EIGHT DEPARTURE