

WAAS CH 42612 W16A	APP CRS 164°	Rwy Ldg 7502 TDZE 710 Apt Elev 710
--	------------------------	---

RNAV (GPS) RWY 16

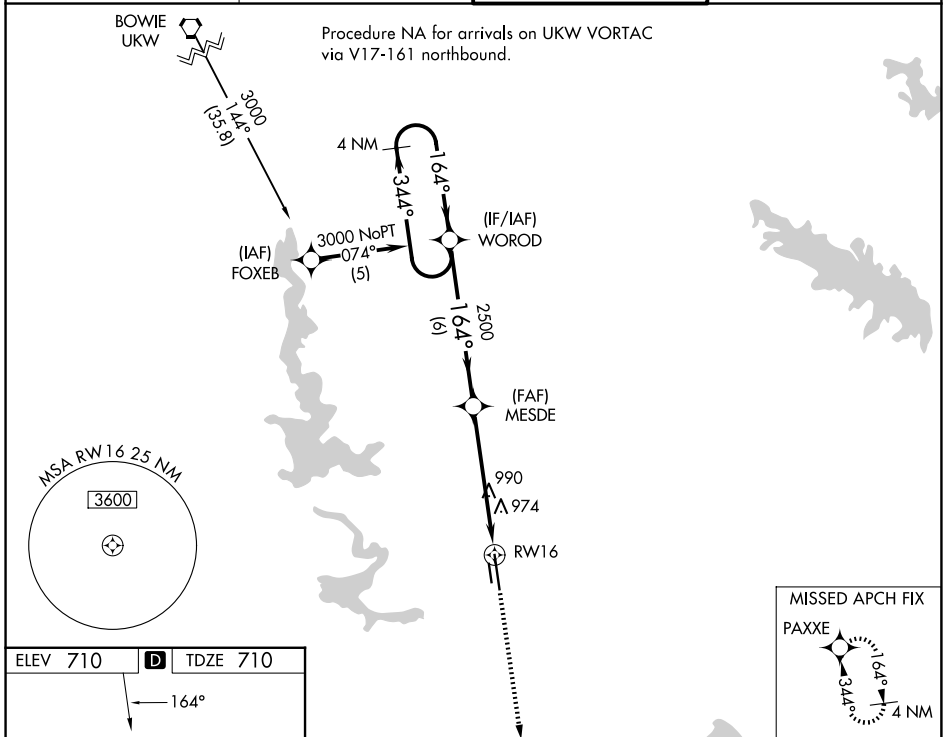
FORT WORTH MEACHAM INTL (FTW)

⚠ For uncompensated Baro-VNAV systems, LNAV/VNAV NA below -16°C (4°F) or above 47°C (116°F). DME/DME RNP-0.3 NA.
⚠ ** RVR 1800 authorized with use of FD or AP or HUD to DA.

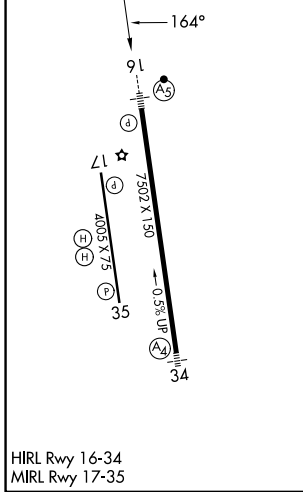


MISSED APPROACH: Climb to 3000 direct PAXXE and hold.

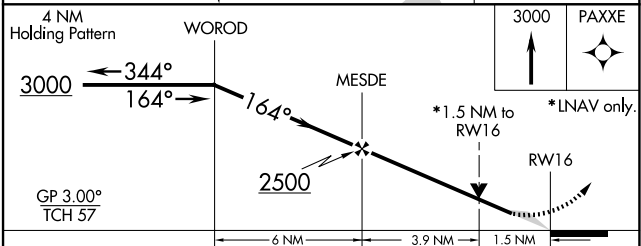
ATIS 120.7	LONE STAR APP CON 118.1 306.95 (N) 135.975 379.9 (S)	MEACHAM TOWER 118.3 257.8	GND CON 121.9
----------------------	--	-------------------------------------	-------------------------



ELEV 710	D	TDZE 710
----------	----------	----------



HIRL Rwy 16-34
MIRL Rwy 17-35



CATEGORY	A	B	C	D
LPV DA **		910/24	200 (200-1/2)	
LNAV/VNAV DA		1284-1 1/2	574 (600-1 1/2)	
LNAV MDA	1240/24	530 (600-1/2)	1240/50 530 (600-1)	1240/60 530 (600-1 1/4)
CIRCLING	1260-1 550 (600-1)	1280-1 570 (600-1)	1340-1 3/4 630 (700-1 3/4)	1500-2 1/2 790 (800-2 1/2)

SC-2, 16 APR 2026 to 14 MAY 2026

SC-2, 16 APR 2026 to 14 MAY 2026