

NANDR THREE DEPARTURE (RNAV)

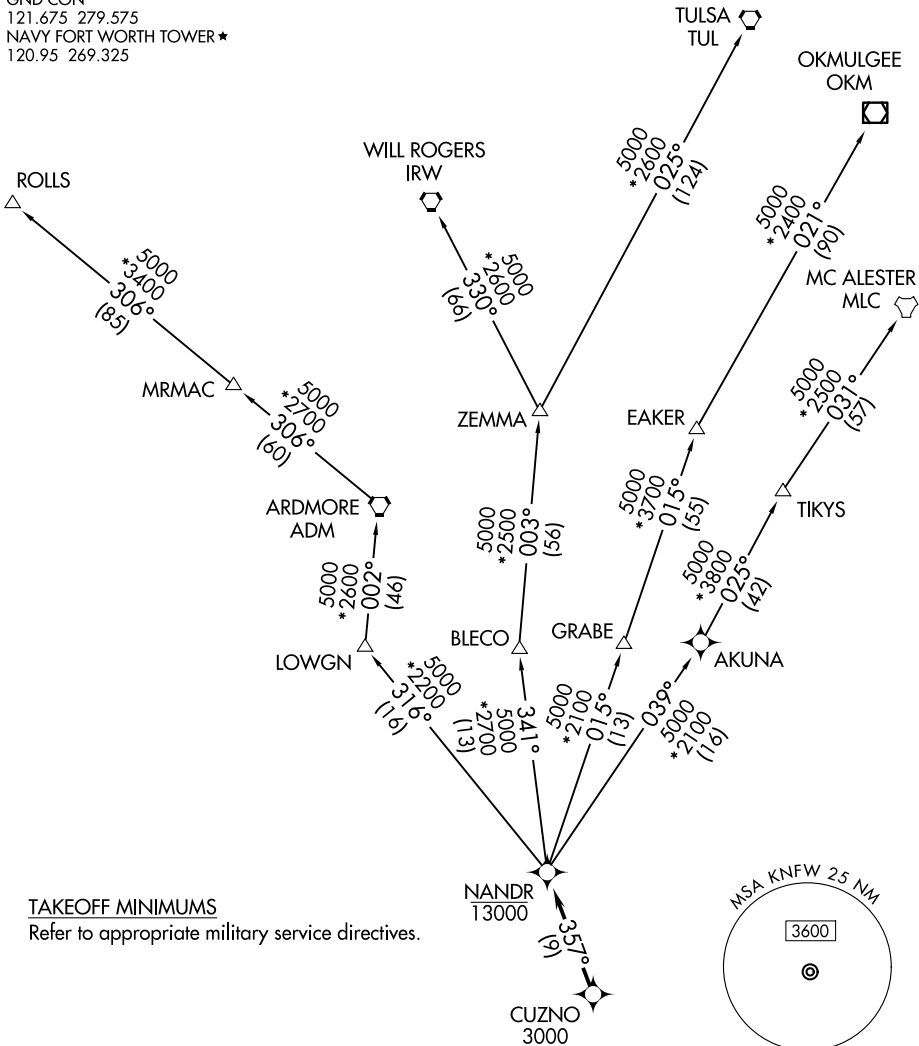
AL-160 (FAA)

FORT WORTH, TEXAS

LONE STAR DEP CON
125.8 257.95
ATIS*
351.675
GND CON
121.675 279.575
NAVY FORT WORTH TOWER*
120.95 269.325

RNAV 1 - DME/DME/IRU or GPS.
RADAR required.

TOP ALTITUDE:
ASSIGNED BY ATC



TAKEOFF MINIMUMS

Refer to appropriate military service directives.

NOTE: EAKER Transition: For TUL terminal arrivals only.
NOTE: TULSA Transition: For all aircraft overflying TUL VORTAC.
NOTE: Aircraft arriving to the Oklahoma City terminal area, file and expect the ZEMMA enroute transition.

NOTE: Chart note to scale.

(CONTINUED ON FOLLOWING PAGE)

NANDR THREE DEPARTURE (RNAV)

FORT WORTH, TEXAS

SC-2, 16 APR 2026 to 14 MAY 2026

SC-2, 16 APR 2026 to 14 MAY 2026