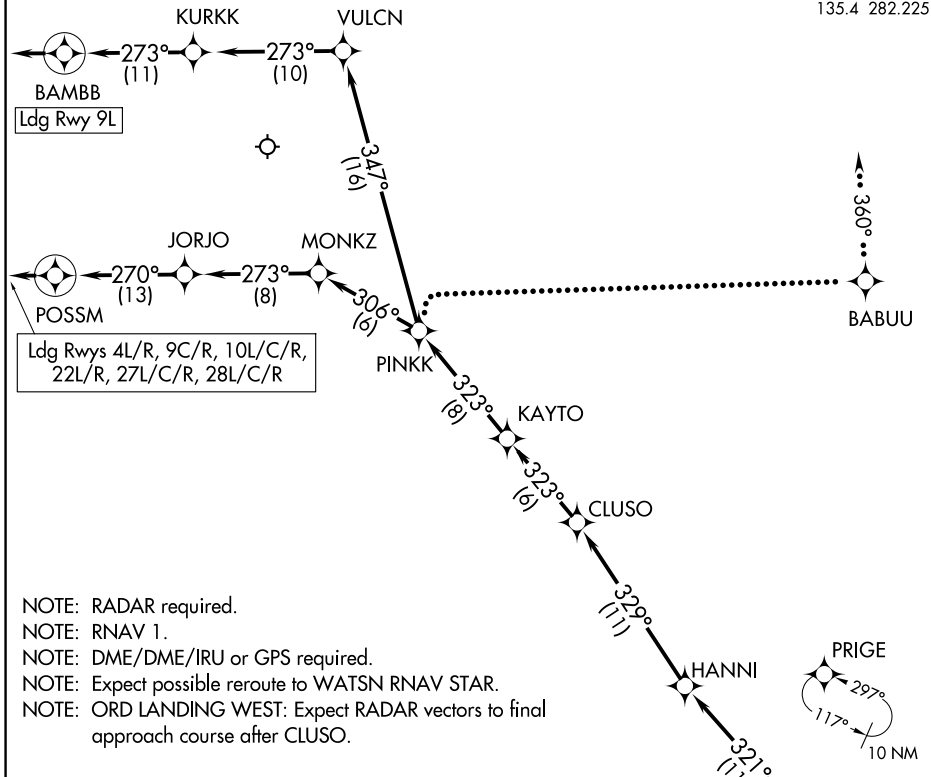


# VEECK FIVE ARRIVAL (RNAV) Arrival Routes

CHICAGO APP CON  
119.0 292.125  
D-ATIS  
135.4 282.225



## ARRIVAL ROUTE DESCRIPTION

From VEECK on track 302° to BOONE, then on track 321° to HANNI, then on track 329° to CLUSO, then on track 323° to KAYTO, then on track 323° to PINKK.

LANDING RWYS 4L/R, 9C/R, 10L/C/R, 22L/R, 27L/C/R, 28L/C/R:  
From PINKK on track 306° to MONKZ, then on track 273° to JORJO, then on track 270° to POSSM, then on track 270°. Expect RADAR vectors to final approach course.

LANDING RWY 9L: From PINKK on track 347° to VULCN, then on track 273° to KURKK, then on track 273° to BAMBB, then on track 273°. Expect RADAR vectors to final approach course.

### LOST COMMUNICATIONS:

ORD AIRCRAFT LANDING WEST: At PINKK, turn right direct BABUU, maintain 5000, then via 360° heading, intercept localizer and execute ILS or LOC Rwy 28R approach.

ORD AIRCRAFT LANDING EAST: Standard.

NOTE: Chart not to scale.

# VEECK FIVE ARRIVAL (RNAV) Arrival Routes

EC-3, 16 APR 2026 to 14 MAY 2026

EC-3, 16 APR 2026 to 14 MAY 2026