

KARRR SEVEN DEPARTURE (RNAV)

NOTE: Chart not to scale.

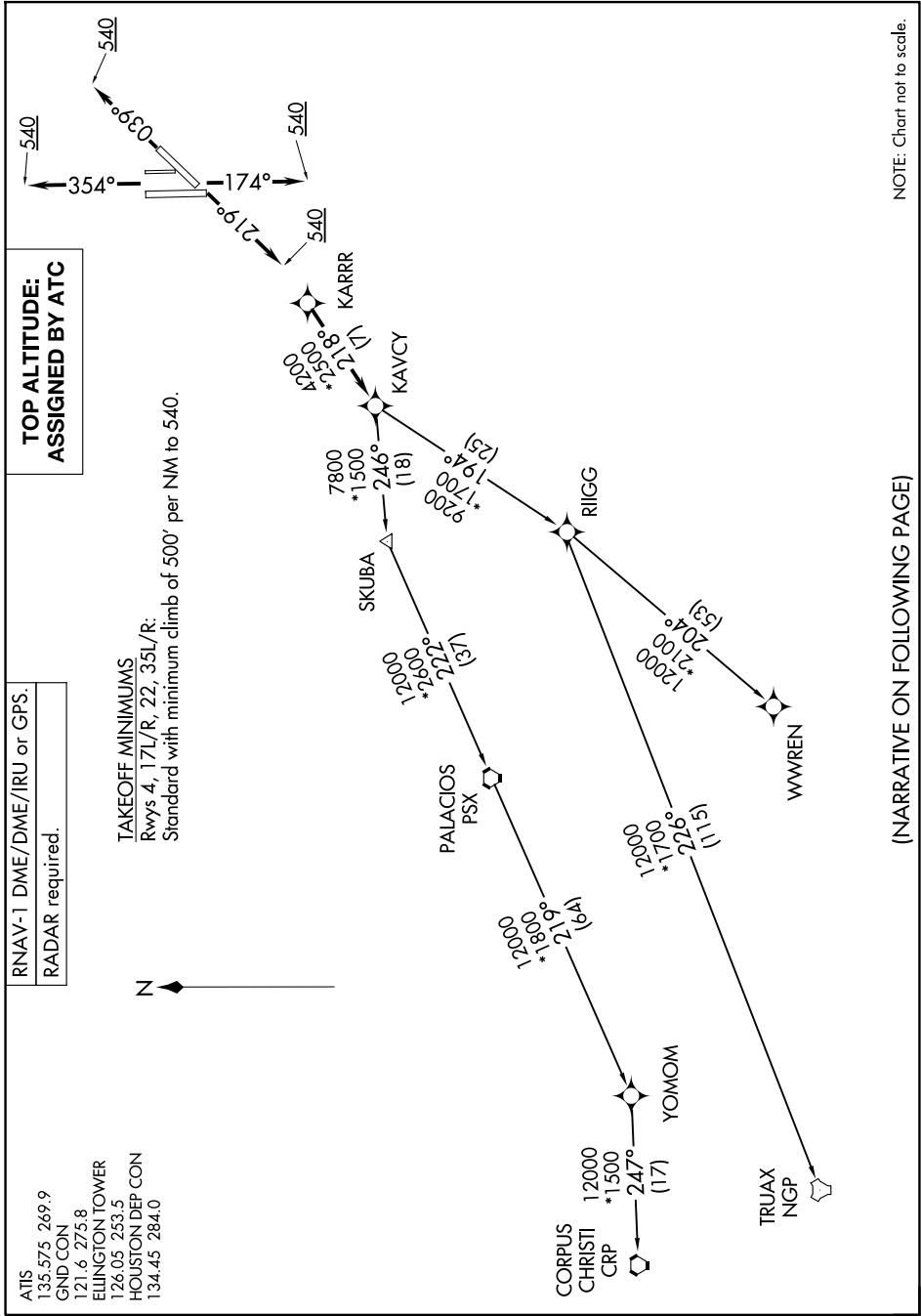
SC-5, 16 APR 2026 to 14 MAY 2026

RNAV-1 DME/DME/IRU or GPS.
RADAR required.

**TOP ALTITUDE:
ASSIGNED BY ATC**

TAKEOFF MINIMUMS
 Rwys 4, 17L/R, 22, 35L/R:
 Standard with minimum climb of 500' per NM to 540.

ATIS 135.575 269.9
 GND CON 121.6 275.8
 ELLINGTON TOWER 126.05 253.5
 HOUSTON DEP CON 134.45 284.0



(NARRATIVE ON FOLLOWING PAGE)

SC-5, 16 APR 2026 to 14 MAY 2026