

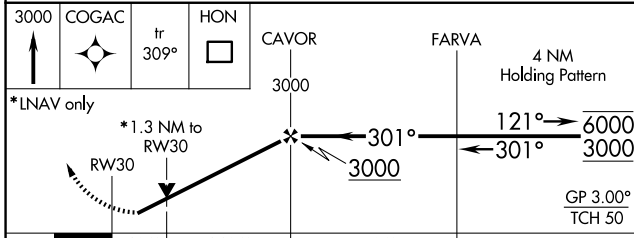
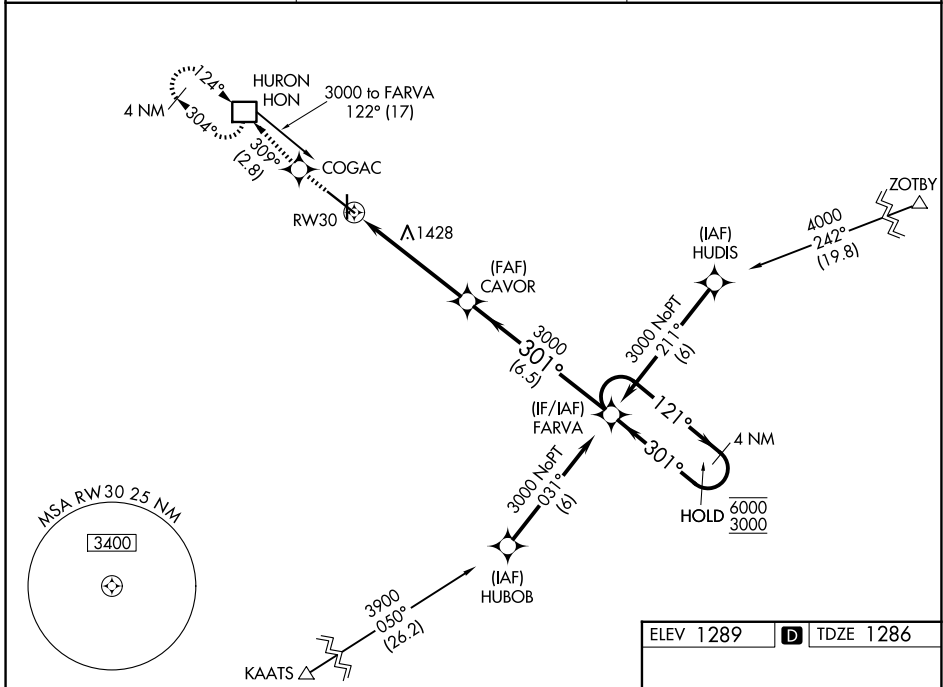
WAAS CH <b>77514</b> <b>W30A</b>	APP CRS <b>301°</b>	Rwy Ldg TDZE Apt Elev	<b>7201</b> <b>1286</b> <b>1289</b>
--	------------------------	-----------------------------	---

# RNAV (GPS) RWY 30

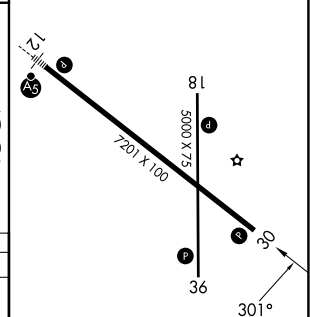
HURON RGNL (HON)

RNP APCH.	MISSED APPROACH: Climb to 3000 direct COGAC and on track 309° to HON DME and hold.
<p><b>⚠</b> Circling Rwy 18, 36 NA at night. Rwy 30 helicopter visibility reduction below 3/4 SM NA. For uncompensated Baro-VNAV systems, LNAV/VNAV NA below -17°C or above 54°C.</p>	

ASOS <b>118.125</b>	MINNEAPOLIS CENTER <b>126.25 339.8</b>	UNICOM <b>123.0 (CTAF) 0</b>
------------------------	---	---------------------------------



ELEV 1289	<b>D</b> TDZE 1286
-----------	--------------------



CATEGORY	A	B	C	D
LPV DA	1559-1 273 (300-1)			
LNAV/VNAV DA	1721-1½ 435 (500-1½)			
LNAV MDA	1760-1 474 (500-1)	1760-1⅜ 474 (500-1⅜)	1760-1½ 474 (500-1½)	
CIRCLING	1820-1 531 (600-1)	1920-1¾ 631 (700-1¾)	1980-2¼ 691 (700-2¼)	

- HIRL Rwy 12-30 **L**
- MRL Rwy 18-36 **L**
- REIL Rws 18, 30 and 36 **L**

NC-1, 16 APR 2026 to 14 MAY 2026

NC-1, 16 APR 2026 to 14 MAY 2026