

WAAS CH <b>53528</b> <b>W18A</b>	APP CRS <b>180°</b>	Rwy Idg <b>5199</b> TDZE <b>430</b> Apt Elev <b>430</b>
--	------------------------	---

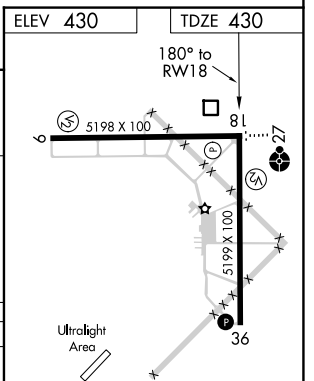
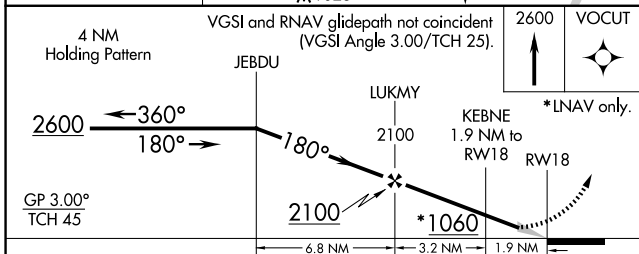
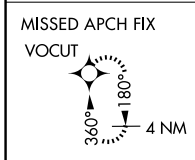
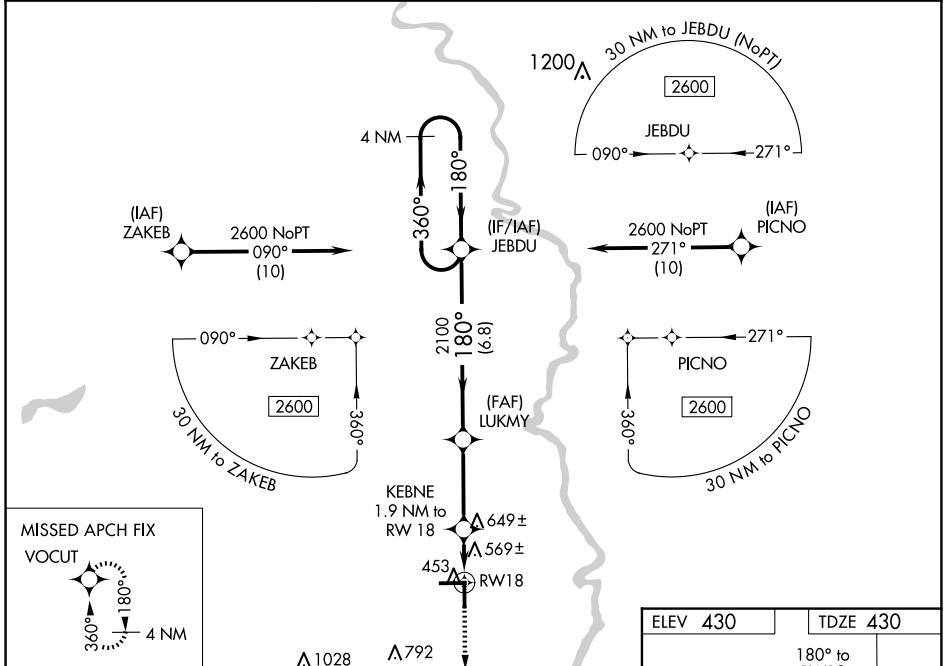
# RNAV (GPS) RWY 18

LAWRENCEVILLE-VINCENNES INTL (LWV)

**⚠** For uncompensated Baro-VNAV systems, LNAV/VNAV NA below -15°C (5°F) or above 41°C (105°F).  
**⚠** DME/DME RNP-0.3 NA. Baro-VNAV and VDP NA when using Mount Carmel altimeter setting. When local altimeter setting not received, use Mount Carmel altimeter setting: increase LPV DA 656 feet; increase LNAV/VNAV DA to 902 feet and all visibilities ½ SM; increase all MDAs 40 feet and LNAV visibility Cat C/D ¼ SM; and Circling visibility Cat D ¼ SM. Circling to Rwy 36 NA at night.

**MISSED APPROACH:**  
Climb to 2600 direct VOCUT and hold.

ASOS <b>118.0</b>	EVANSVILLE APP CON ★ <b>125.6 343.7</b>	UNICOM <b>122.8 (CTAF) ①</b>
----------------------	--	---------------------------------



CATEGORY	A	B	C	D
LPV DA	630-¾		200 (200-¾)	
LNAV/VNAV DA	876-1½		446 (500-1½)	
LNAV MDA	940-1	510 (600-1)	940-1¾	510 (600-1¾)
CIRCLING	940-1	510 (600-1)	940-1½	1160-2¼ 730 (800-2¼)

REIL Rwy 9, 27, 18 and 36 ①  
 MRL Rwy 9-27 and 18-36 ②

EC-3, 16 APR 2026 to 14 MAY 2026

EC-3, 16 APR 2026 to 14 MAY 2026