

WAAS CH 63028 W27A	APP CRS 271°	Rwy Idg TDZE 430 Apt Elev 430	5198
--	------------------------	---	-------------

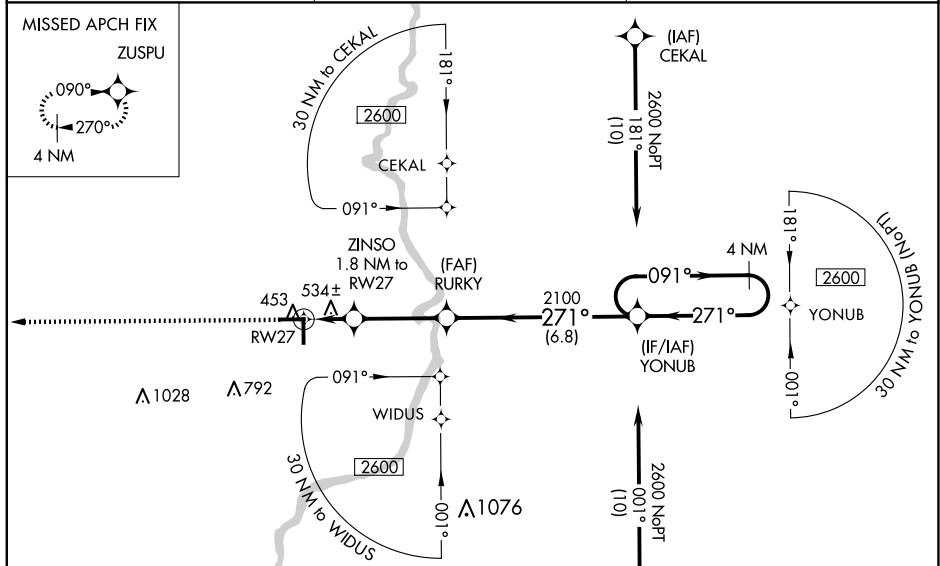
RNAV (GPS) RWY 27

LAWRENCEVILLE-VINCENNES INTL (LWV)

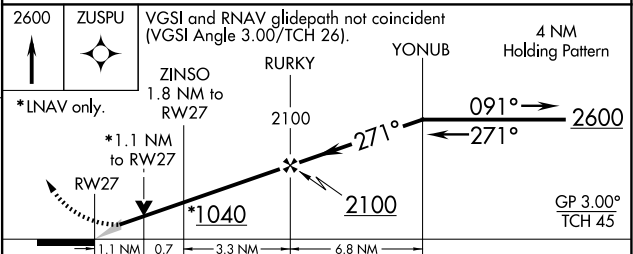
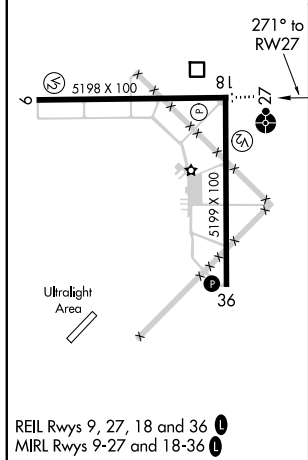
⚠ For uncompensated Baro-VNAV systems, LNAV/VNAV NA below -15°C (5°F) or above 41°C (105°F). DME/DME RNP-0.3 NA. Baro-VNAV and VDP NA when using Mount Carmel altimeter setting. When local altimeter setting not received, use Mount Carmel altimeter setting: increase LPV DA to 706 feet; increase LNAV/VNAV DA to 858 feet and all visibilities 1/8 SM; increase all MDAs 40 feet and Circling visibility Cat D 1/4 SM. Inop table does not apply to LNAV Cat C. For inop ODALS increase LNAV/VNAV all Cats visibility to 1 3/8 miles. For inop ODALS when using Mount Carmel altimeter setting increase LPV all Cats visibility to 7/8 mile, LNAV/VNAV all Cats visibility to 1 1/2 miles and LNAV Cats C and D visibility to 1 1/8 miles. Circling to Rwy 36 NA at night.

ODALS MISSED APPROACH: Climb to 2600 direct ZUSPU and hold.

ASOS 118.0	EVANSVILLE APP CON * 125.6 343.7	UNICOM 122.8 (CTAF)
----------------------	--	-------------------------------



ELEV 430	TDZE 430
----------	----------



CATEGORY	A	B	C	D
LPV DA		680-3/4	250 (300-3/4)	
LNAV/VNAV DA		832-1/4	402 (500-1/4)	
LNAV MDA	800-3/4	370 (400-3/4)	800-1	370 (400-1)
CIRCLING	880-1 450 (500-1)	900-1 470 (500-1)	940-1 1/2 510 (600-1 1/2)	1160-2 1/4 730 (800-2 1/4)

EC-3, 16 APR 2026 to 14 MAY 2026

EC-3, 16 APR 2026 to 14 MAY 2026