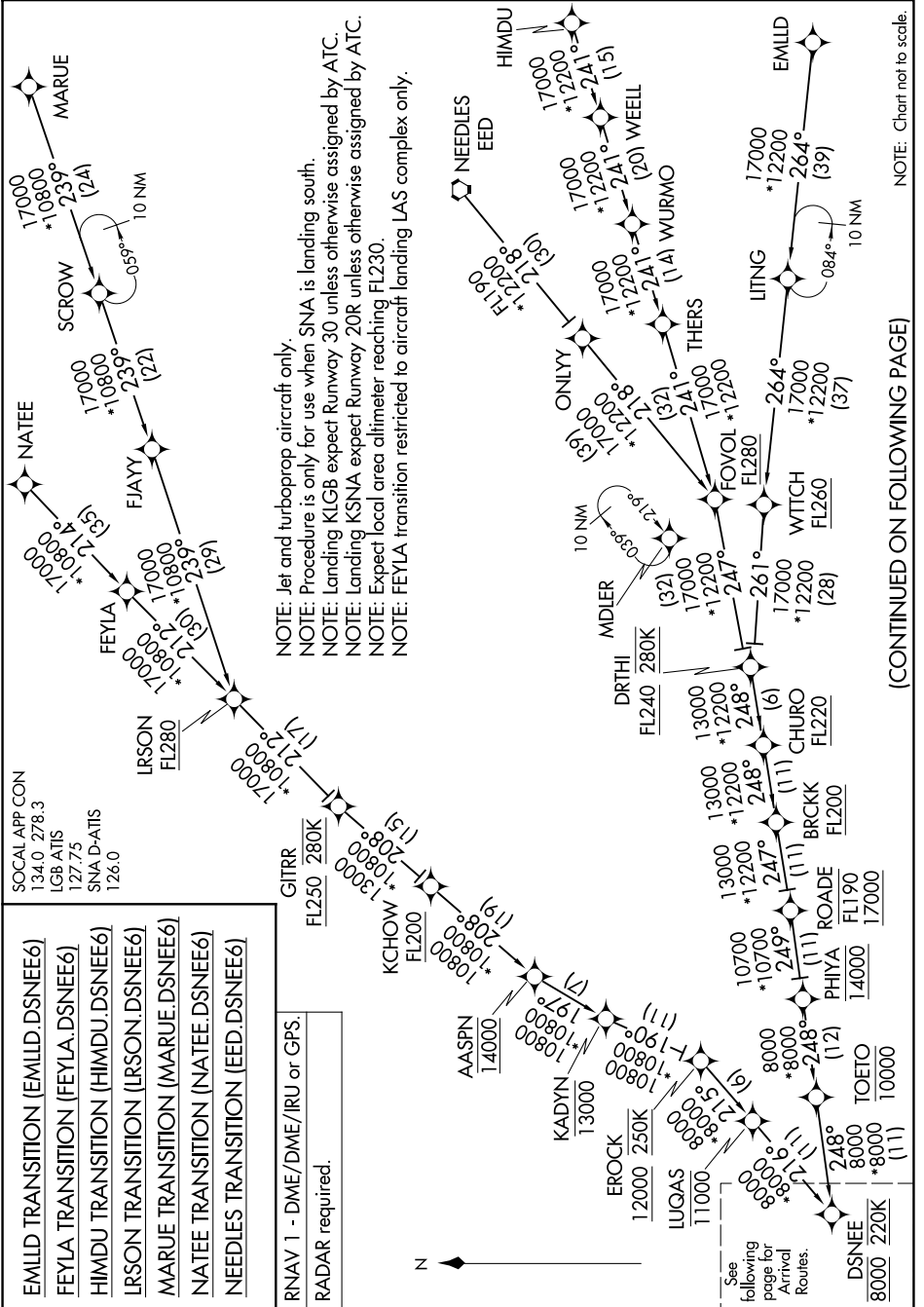


# DSNEE SIX ARRIVAL (RNAV) Transition Routes

LONG BEACH, CALIFORNIA

SW-3, 16 APR 2026 to 14 MAY 2026



NOTE: Jet and turboprop aircraft only.  
 NOTE: Procedure is only for use when SNA is landing south.  
 NOTE: Landing KRGB expect Runway 30 unless otherwise assigned by ATC.  
 NOTE: Landing KNSA expect Runway 20R unless otherwise assigned by ATC.  
 NOTE: Expect local area altimeter reaching FL230.  
 NOTE: FEYLA transition restricted to aircraft landing LAS complex only.

NOTE: Chart not to scale.

(CONTINUED ON FOLLOWING PAGE)

SW-3, 16 APR 2026 to 14 MAY 2026

# DSNEE SIX ARRIVAL (RNAV) Transition Routes

LONG BEACH, CALIFORNIA