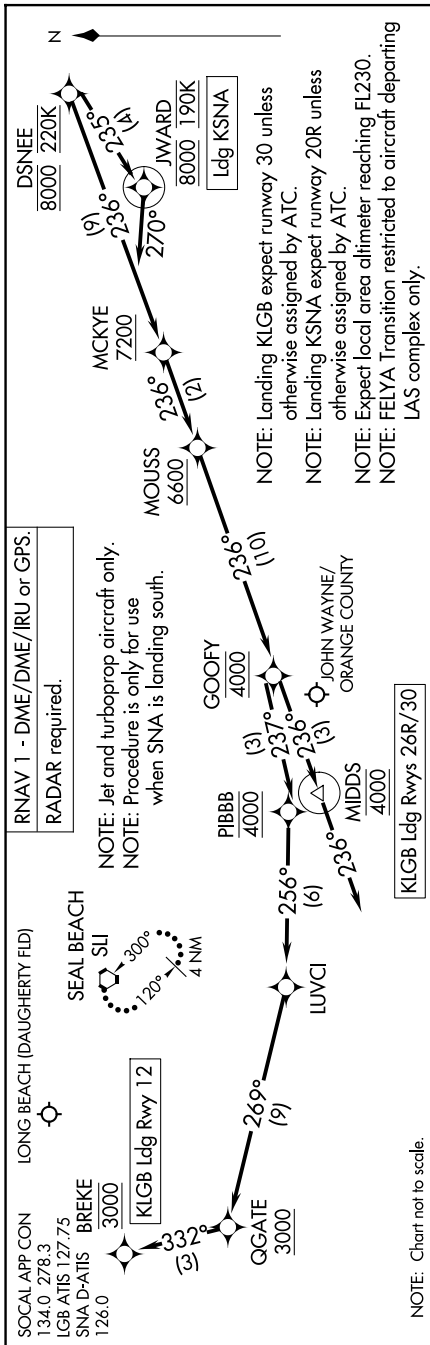


DSNEE SIX ARRIVAL (RNAV) Arrival Routes

LONG BEACH, CALIFORNIA

SW-3, 16 APR 2026 to 14 MAY 2026



ARRIVAL ROUTE DESCRIPTION

LANDING KLGB RUNWAY 12: From DSNEE on track 236° to cross MCKYE at or above 7200, then on track 236° to cross MOUSS at or above 6600, then on track 236° to cross GOOFOY at 4000, then on track 237° to cross PIBBB at 4000, then on track 256° to LUVCI, then on track 269° to cross QGATE at or above 3000, then on track 332° to cross BREKE at 3000. Expect RNAV (RNP) RWY 12 approach.

LANDING KLGB RUNWAYS 26R, 30: From DSNEE on track 236° to cross MCKYE at or above 7200, then on track 236° to cross MOUSS at or above 6600, then on track 236° to cross GOOFOY at 4000, then on track 236° to cross MIDDS at 4000, then on track 236° Expect RADAR vectors for the ILS or RNAV RWY 26R, 30 approaches.

LANDING KSNNA: From DSNEE on track 235° to cross JWARD at 8000 and at 190K, then on heading 270°. Expect RADAR vectors for ILS or RNAV RWY 20R approach.

LOST COMMUNICATIONS:

LANDING LGB RUNWAYS 26R/30: After MIDDS proceed on the RNAV (RNP) Y RWY 30 or ILS or LOC RWY 30 approach.

LANDING LGB RUNWAY 12: After BREKE proceed on the RNAV (RNP) RWY 12 approach, if unable to conduct approach, after BREKE proceed to SLI VORTAC and hold.

LANDING SNA: After DSNEE proceed on the RNAV (RNP) Z RWY 20R approach. If unable to conduct approach, after DSNEE maintain 6000 proceed to SLI VORTAC and hold.

SW-3, 16 APR 2026 to 14 MAY 2026

DSNEE SIX ARRIVAL (RNAV) Arrival Routes

LONG BEACH, CALIFORNIA