

PCIFC THREE ARRIVAL (RNAV) Transition Routes

LONG BEACH (DAUGHERTY FLD) (LGB)
LONG BEACH, CALIFORNIA

RNAV 1 - DME/DME/IRU or GPS.

RADAR required.

SOCAL APP CON

127.4 263.025

ATIS

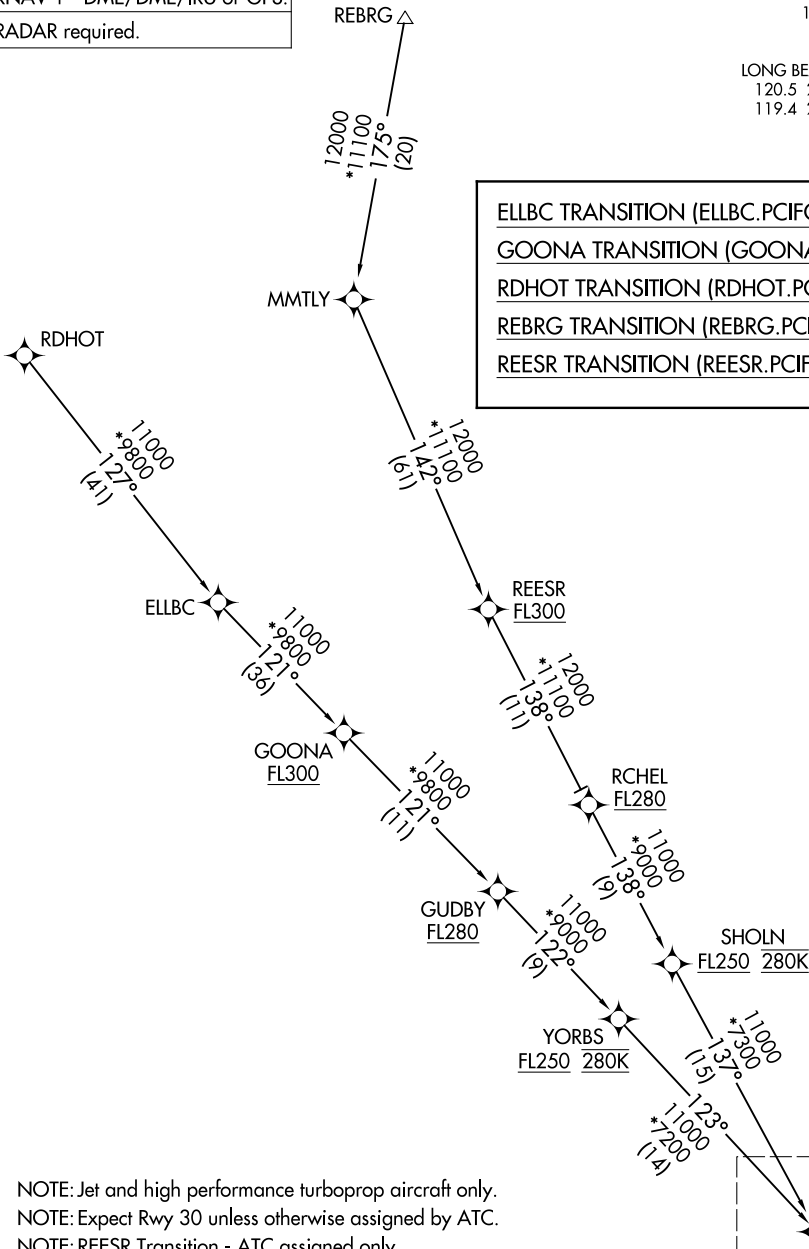
127.75

LONG BEACH TOWER*

120.5 257.6 (Rwy 12)

119.4 257.6 (Rwy 30)

- ELLBC TRANSITION (ELLBC.PCIFC3)
- GOONA TRANSITION (GOONA.PCIFC3)
- RDHOT TRANSITION (RDHOT.PCIFC3)
- REBRG TRANSITION (REBRG.PCIFC3)
- REESR TRANSITION (REESR.PCIFC3)



NOTE: Jet and high performance turboprop aircraft only.
 NOTE: Expect Rwy 30 unless otherwise assigned by ATC.
 NOTE: REESR Transition - ATC assigned only.

(CONTINUED ON FOLLOWING PAGE)

NOTE: Chart not to scale.

See following page for Arrival Routes.

SW-3, 16 APR 2026 to 14 MAY 2026

SW-3, 16 APR 2026 to 14 MAY 2026