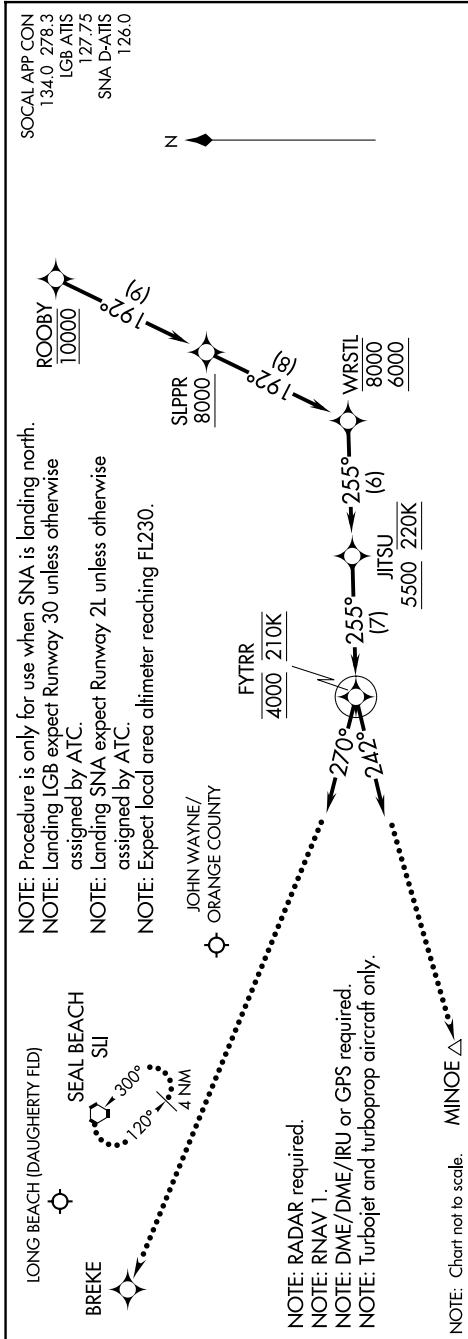


ROOBY THREE ARRIVAL (RNAV) Arrival Routes

LONG BEACH, CALIFORNIA

SW-3, 16 APR 2026 to 14 MAY 2026



NOTE: Procedure is only for use when SNA is landing north.
 NOTE: Landing LGB expect Runway 30 unless otherwise assigned by ATC.
 NOTE: Landing SNA expect Runway 2L unless otherwise assigned by ATC.
 NOTE: Expect local area altimeter reaching FL230.

LONG BEACH (DAUGHERTY FID)
 SEAL BEACH
 SUI
 300'
 120°
 4 NM

JOHN WAYNE/
 ORANGE COUNTY

FYTRR
 4000 210K

NOTE: RADAR required.
 NOTE: RNAV 1.
 NOTE: DME/DME/IRU or GPS required.
 NOTE: Turbojet and turboprop aircraft only.

NOTE: Chart not to scale.

ARRIVAL ROUTE DESCRIPTION

LANDING LGB: From ROOBY on track 192° to cross SLPPR at or above 8000, then on track 192° to cross WRSTL between 6000 and 8000, then on track 255° to cross JITSU at or above 5500 and at 220K, then on track 255° to cross FYTRR at 4000 and at 210K, then on heading 270° or as assigned by ATC. Expect RADAR vectors to final approach course.

LANDING SNA: From ROOBY on track 192° to cross SLPPR at or above 8000, then on track 192° to cross WRSTL between 6000 and 8000, then on track 255° to cross JITSU at or above 5500 and at 220K, then on track 255° to cross FYTRR at 4000 and at 210K, then on heading 242° or as assigned by ATC. Expect RADAR vectors to final approach course.

LOST COMMUNICATIONS:

LANDING LGB RUNWAY 30: Intercept and proceed on the RNAV (RNP) RWY 30 or ILS RWY 30 approach.

LANDING LGB RUNWAY 12: Maintain 3000 and proceed direct BREKE then on the RNAV (RNP) RWY 12 approach. If unable approach to LGB climb to 4000 direct SUI VORTAC and hold.

LANDING SNA RUNWAY 2L: Proceed on the RNAV (RNP) RWY 2L approach or maintain 3000 and proceed direct MINOE then on the LOC BC RWY 2L approach. If unable approach to SNA climb to 5000 direct SUI VORTAC and hold.

SW-3, 16 APR 2026 to 14 MAY 2026