

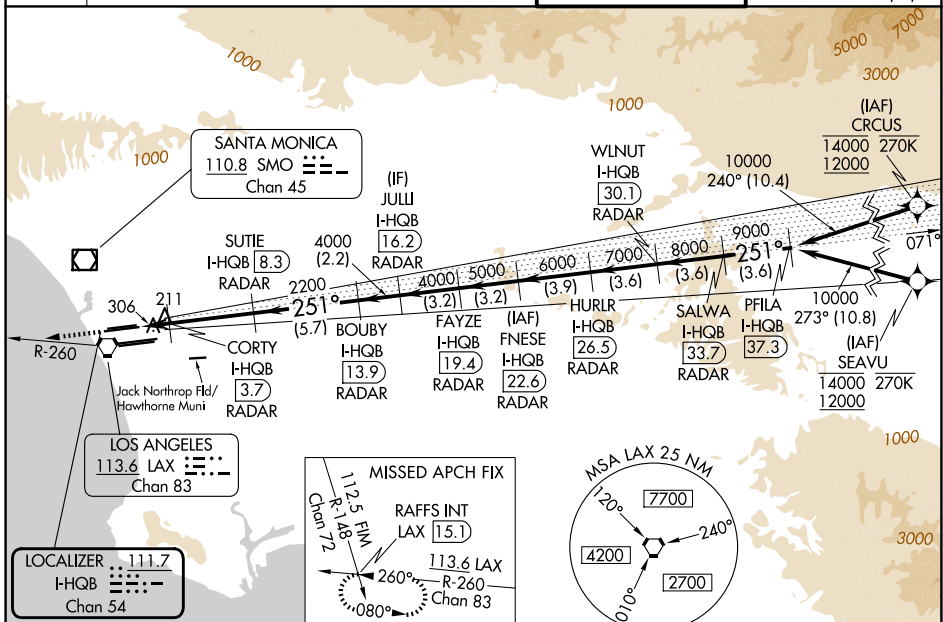
LOC/DME I-HQEB 111.7 Chan 54	APP CRS 251°	Rwy Ldg 9483 TDZE 123 Apt Elev 128	24L 8926	24R 122 128
--	------------------------	--	--------------------	---------------------------------

ILS or LOC RWY 24L

LOS ANGELES INTL (LAX)

RNAV 1-GPS or RADAR required for procedure entry. DME or RADAR required. From CRCUS: RNAV 1-GPS required. From SEAVU: RNAV 1-GPS required.		MALSR Rwy 24L 	ALSF-2 Rwy 24R 	MISSED APPROACH: Climb to 2000 on heading 251° and LAX VORTAC R-260 to RAFFS INT/LAX 15.1 DME and hold.
<p>Simultaneous approach authorized with HHR. Inop table does not apply to Sidestep Rwy 24R Cat A and B. Simultaneous approach authorized. LOC procedure NA during simultaneous operations with HHR LOC RWY 25. For inop ALS, increase Sidestep 24R Cat C visibility to 1½SM. For inop ALS, increase S-LOC 24L Cat C/D visibility to RVR 5500. #RVR 1800 authorized with use of FD or AP or HUD to DA.</p>				

D-ATIS 133.8	SOCAL APP CON 124.3 363.2 (APCH from W) 124.9 269.0 (090°-224°) 124.5 235.975 (225°-044°) 128.5 360.7 (045°-089°)	LOS ANGELES TOWER 133.9 239.3 (N) 120.95 379.1 (S)	GND CON 121.65 327.0 (N) 121.75 327.0 (S) 121.4 327.0 (W)
------------------------	---	--	---



ELEV 128	TDZE 24L 123	TDZE 24R 122	VGSI and ILS glidepath not coincident (VGSI Angle 3.00/TCH 79).	
LAX R-260		RAFFS INT	SALWA I-HQEB 37.3	PFILA I-HQEB 37.3
*LOC only.		SUTIE I-HQEB 8.3	FAYZE I-HQEB 19.4	FNESE I-HQEB 22.6
CORTY I-HQEB 3.7		BOUBY I-HQEB 13.9	JULI I-HQEB 16.2	HURLR I-HQEB 26.5
I-HQEB 1.9		I-HQEB 2.9	I-HQEB 3.7	I-HQEB 30.1
2000		740*	2200	10000
1 NM 0.8		4.6 NM	5.7 NM	2.2 NM 3.2 NM 3.2 NM 3.9 NM 3.6 NM 3.6 NM 3.6 NM
CATEGORY	A		B	
S-ILS 24L#	323/24 200 (200-½)			
S-LOC 24L	500/24 377 (400-½)		500/35 377 (400-¾)	
SIDESTEP 24R	500/55 378 (400-1)		500-1½ 378 (400-1½)	

SW-3, 16 APR 2026 to 14 MAY 2026

SW-3, 16 APR 2026 to 14 MAY 2026