

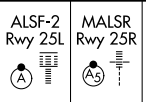
LOC/DME I-LAX	APP CRS	Rwy Ldg	25L	25R
109.9	251°		11095	11134
Chan 36		TDZE	104	104
		Apt Elev	128	128

ILS or LOC RWY 25L

LOS ANGELES INTL (LAX)

RNP APCH - GPS. From CLIPUR or CRCUS or SEAVU or TRNDO. DME or RADAR required.

Simultaneous approach authorized. Simultaneous approach authorized with HHR.

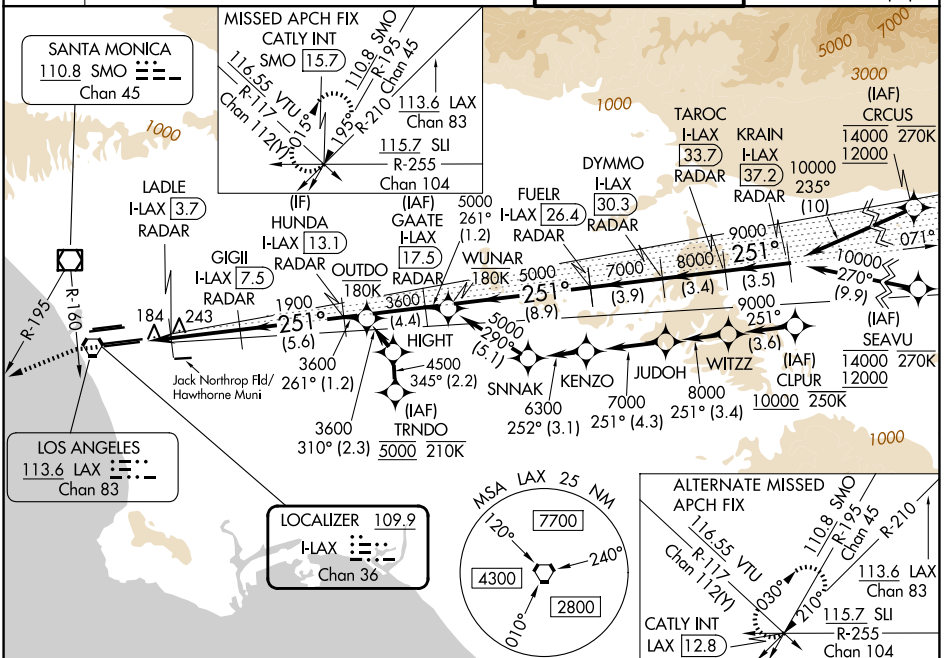


MISSED APPROACH: Climb to 2000 on heading 251° until crossing the SMO R-160, then left turn on heading 236° and on the SMO R-195 to CATLY INT/SMO 15.7 DME and hold.

D-ATIS 133.8	SOCAL APP CON			
	124.3 363.2 (APCH from W) 124.9 269.0 (090°-224°)			
	124.5 235.975 (225°-044°) 128.5 360.7 (045°-089°)			

LOS ANGELES TOWER	
133.9	239.3 (N)
120.95	379.1 (S)

GND CON	
121.65	327.0 (N)
121.75	327.0 (S)
121.4	327.0 (W)



2000 hdg 251°	SMO R-160	SMO R-195	CATLY INT	TAROC I-LAX	KRAIN I-LAX
	hdg 236°			33.7	37.2
	LADLE I-LAX 3.7	GIGII I-LAX 7.5	HUNDA I-LAX 13.1	FUFLR I-LAX 26.4	DYMMO I-LAX 30.3
	RADAR	RADAR	RADAR	RADAR	RADAR
	I-LAX 2	I-LAX 3			
	700	1900	3600	5000	7000
	1 NM	0.8	3.7 NM	5.6 NM	4.4 NM
	0.8	3.7 NM	5.6 NM	4.4 NM	8.9 NM
					3.9 NM
					3.4 NM
					3.5 NM
CATEGORY	A	B	C	D	
S-ILS 25L	304/18 200 (200-1/2)				
S-LOC 25L	480/24 376 (400-1/2)		480/35 376 (400-3/4)		
SIDESTEP 25R	480/55 376 (400-1)		480-1 1/2 376 (400-1 1/2)		

ELEV 128	TDZE 25L 104	TDZE 25R 104			
TDZ/CL Rwy's 6R, 7L, 24R, and 25L HIRL all Rwy's					
FAF to MAP 5.5 NM					
Knots	60	90	120	150	180
Min:Sec	5:30	3:40	2:45	2:12	1:50

SW-3, 16 APR 2026 to 14 MAY 2026

SW-3, 16 APR 2026 to 14 MAY 2026