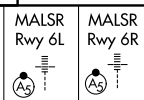


LOC/DME I-UWU 108.5 Chan 22	APP CRS 071°	Rwy Ldg 8566 9748 TDZE 119 116 Apt Elev 128 128	6L 6R
---	------------------------	--	----------

ILS or LOC RWY 6L

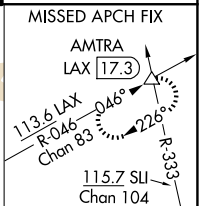
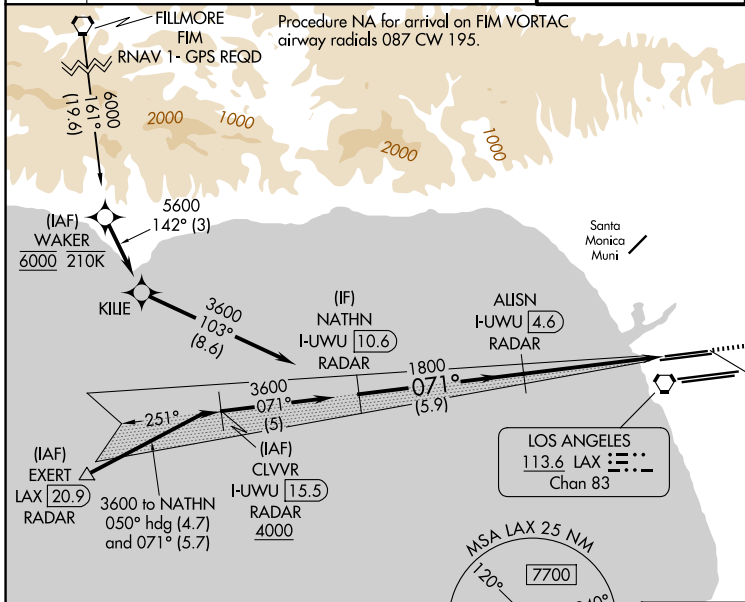
LOS ANGELES INTL (LAX)

▼ Inop table does not apply to Sidestep 6R Cats A/B. For inop ALS, increase S-LOC 6L Cat C/D visibility to RVR 5500. Simultaneous approach authorized. Autopilot coupled approach NA below 503.

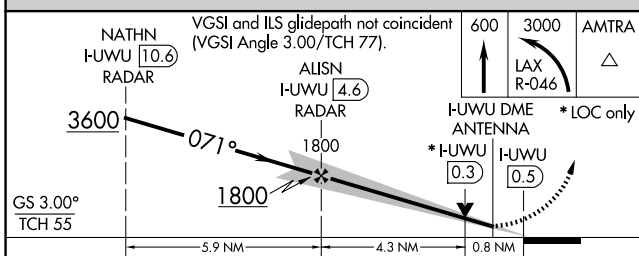


MISSED APPROACH: Climb to 600 then climbing left turn to 3000 on LAX VORTAC R-046 to AMTRA INT/LAX 17.3 DME and hold.

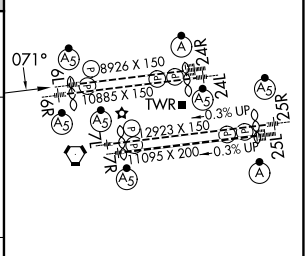
D-ATIS 133.8	SOCAL APP CON 124.3 363.2 (APCH from W) 124.9 269.0 (090°-224°) 124.5 235.975 (225°-044°) 128.5 360.7 (045°-089°)	LOS ANGELES TOWER 133.9 239.3 (N) 120.95 379.1 (S)	GND CON 121.65 327.0 (N) 121.75 327.0 (S) 121.4 327.0 (W)
------------------------	---	--	---



DME or RADAR REQUIRED



ELEV 128	D TDZE 6L 119
	TDZE 6R 116



CATEGORY	A	B	C	D
S-ILS 6L	369/24 250 (300-½)			
S-LOC 6L	460/24 341 (400-½)		460/30 341 (400-¾)	
SIDESTEP 6R	460/55 344 (400-1)			460-1½ 344 (400-1½)

TDZ/CL Rwy 6R, 7L, 24R, and 25L	HRL all Rwy				
FAF to MAP 5.1 NM					
Knots	60	90	120	150	180
Min:Sec	5:06	3:24	2:33	2:02	1:42

SW-3, 16 APR 2026 to 14 MAY 2026

SW-3, 16 APR 2026 to 14 MAY 2026