

OCEAN THREE ARRIVAL

AL-237 (FAA)

LOS ANGELES INTL (LAX)
LOS ANGELES, CALIFORNIA

SW-3, 16 APR 2026 to 14 MAY 2026

ARRIVAL ROUTE DESCRIPTION

From over JLI VORTAC on JLI R-263 and OCN R-083 to VISTA, then on OCN R-083 to CYNDE DME, then on OCN R-083 to OCN VORTAC, then on OCN R-272 and VTU R-114 to SHILY INT, then on SLI R-251 to DOYLE INT, then on VTU R-129 to EXERT INT, then on LAX R-246 to MERMA INT. Expect RADAR vectors to final approach course for Runways 6 or 7.

SOCAL APP CON
128.1 281.4
D-ATIS ARR
133.8

FILLMORE
112.5 FM
Chan 72

SANTA MONICA
110.8 SMO
Chan 45

LOS ANGELES
113.6 LAX
Chan 83

VENTURA
116.55 VTU
Chan 112(Y)

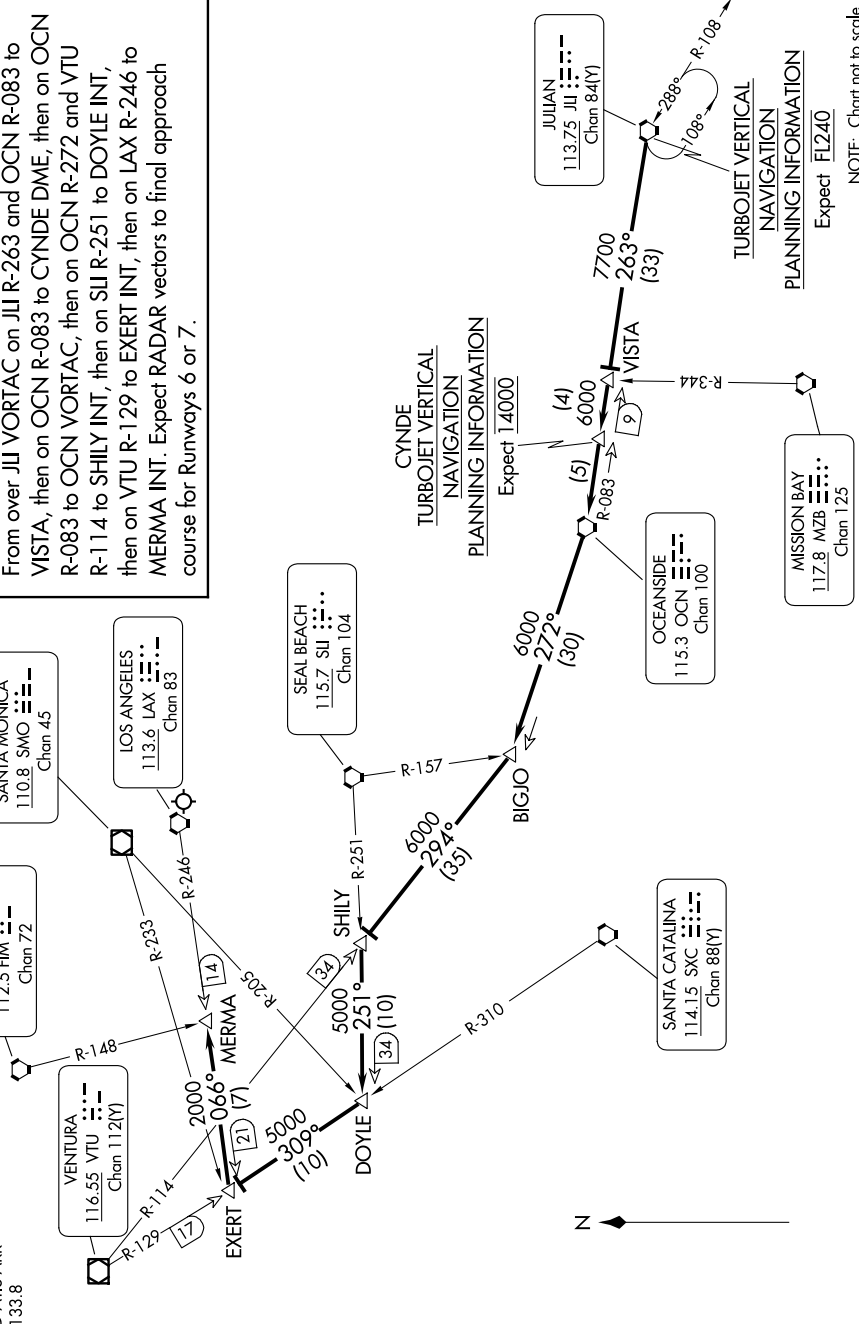
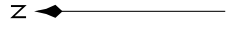
SEAL BEACH
115.7 SLI
Chan 104

OCEANSIDE
115.3 OCN
Chan 100

SANTA CATALINA
114.15 SCX
Chan 88(Y)

MISSION BAY
117.8 MZB
Chan 125

JULIAN
113.75 JLI
Chan 84(Y)



OCEAN THREE ARRIVAL

LOS ANGELES, CALIFORNIA
LOS ANGELES INTL (LAX)

SW-3, 16 APR 2026 to 14 MAY 2026