


APP CRS <b>071°</b>	Rwy Ldg <b>8566</b>
	TDZE <b>119</b>
	Apt Elev <b>128</b>

# RNAV (RNP) Z RWY 6L

LOS ANGELES INTL (LAX)

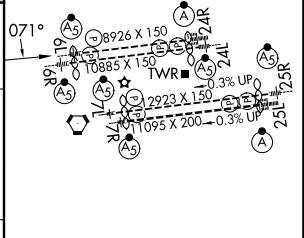
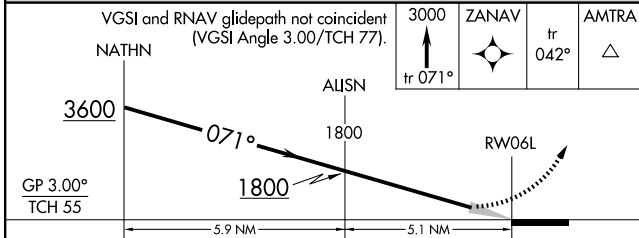
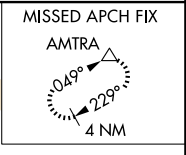
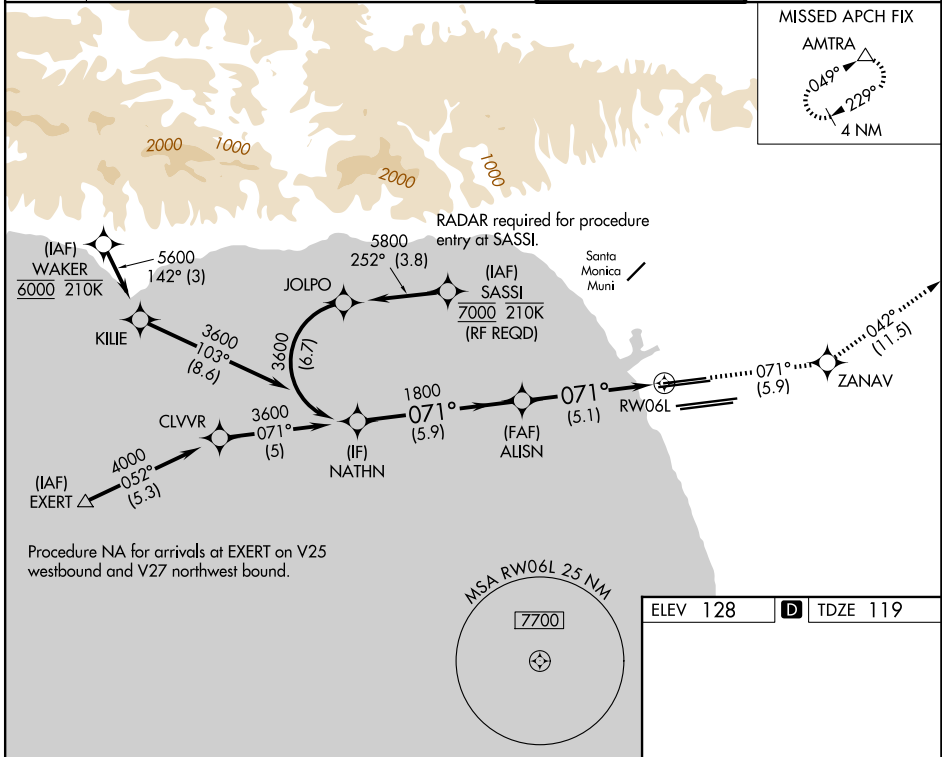
**▼** For uncompensated Baro-VNAV systems, procedure NA below 5°C (41°F) or above 54°C (130°F). Simultaneous approach authorized. GPS required. For inop MALSR, increase RNP 0.30 all Cats visibility to RVR 6000.

**MALSR**  


**MISSED APPROACH:** Climb to 3000 on track 071° to ZANAV and on track 042° to AMTRA and hold.

D-ATIS <b>133.8</b>	SOCAL APP CON <b>124.3 363.2</b> (APCH from W) <b>124.9 269.0</b> (090°-224°) <b>124.5 235.975</b> (225°-044°) <b>128.5 360.7</b> (045°-089°)
------------------------	---

LOS ANGELES TOWER <b>133.9 239.3</b> (N) <b>120.95 379.1</b> (S)	GND CON <b>121.65 327.0</b> (N) <b>121.75 327.0</b> (S) <b>121.4 327.0</b> (W)
--	---



CATEGORY	A	B	C	D
RNP 0.30 DA	484/40 365 (400-¾)			

**AUTHORIZATION REQUIRED**

TDZ/CL Rwy 6R, 7L, 24R, and 25L  
HIRL all Rwy's

SW-3, 16 APR 2026 to 14 MAY 2026

SW-3, 16 APR 2026 to 14 MAY 2026