

APP CRS 071°	Rwy Ldg 9748
	TDZE 116
	Apt Elev 128

RNAV (RNP) Z RWY 6R

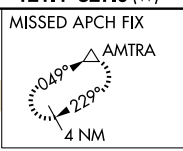
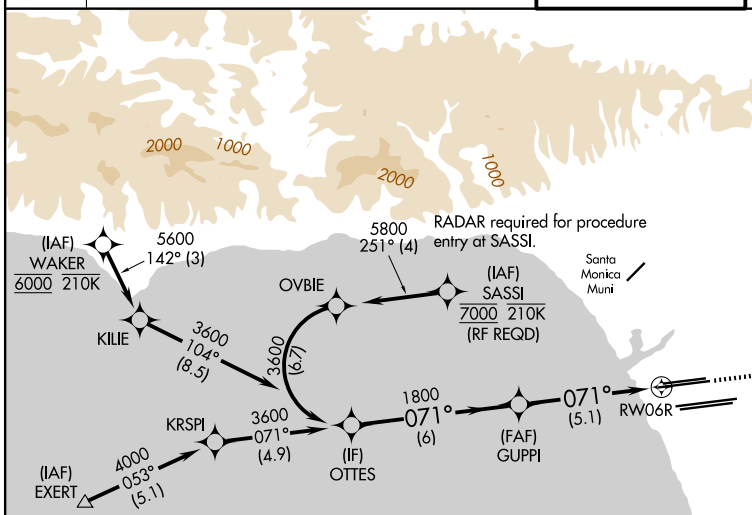
LOS ANGELES INTL (LAX)

For uncompensated Baro-VNAV systems, procedure NA below 5°C (41°F) or above 54°C (130°F). GPS required. Simultaneous approach authorized. For inop ALS, increase RNP 0.30 all Cats visibility to RVR 6000.

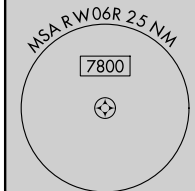


MISSED APPROACH: Climb to 3000 on track 071° to ZIMLO and on track 042° to AMTRA and hold.

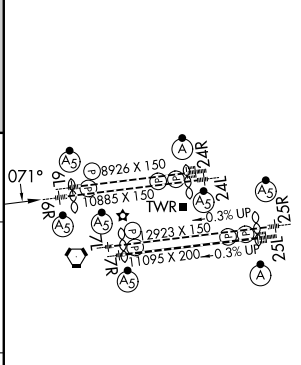
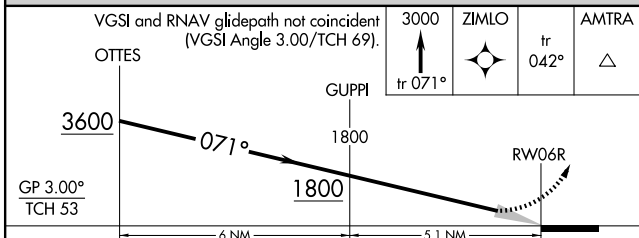
D-ATIS 133.8	SOCAL APP CON		LOS ANGELES TOWER		GND CON	
	124.3 363.2 (APCH from W)	124.9 269.0 (090°-224°)	133.9 239.3 (N)	121.65 327.0 (N)	121.75 327.0 (S)	121.4 327.0 (W)
	124.5 235.975 (225°-044°)	128.5 360.7 (045°-089°)	120.95 379.1 (S)			



Procedure NA for arrivals at EXERT on V25 westbound and V27 northwest bound.



ELEV 128	D TDZE 116
----------	-------------------



CATEGORY	A	B	C	D
RNP 0.30 DA	471/40 355 (400-¾)			

AUTHORIZATION REQUIRED

TDZ/CL Rwy 6R, 7L, 24R, and 25L
HIRL all Rwy's

SW-3, 16 APR 2026 to 14 MAY 2026

SW-3, 16 APR 2026 to 14 MAY 2026