

# VISTA THREE ARRIVAL

AL-237 (FAA)

SW-3, 16 APR 2026 to 14 MAY 2026

## ARRIVAL ROUTE DESCRIPTION

**JULIAN TRANSITION (JLI.VISTA3):** From over JLI VORTAC on JLI R-263 and OCN R-083 to VISTA. Thence, . . .

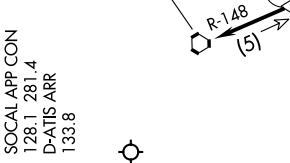
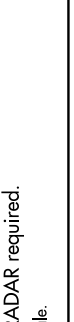
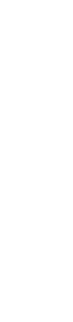
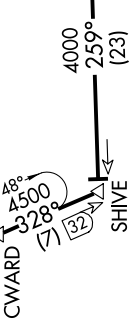
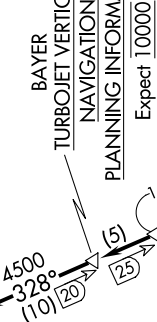
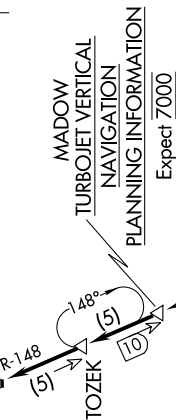
. . . from VISTA to CYNDE on OCN R-083. From CYNDE to OCN VORTAC on OCN R-083. From OCN VORTAC to SHIVE on OCN R-259 and SLI R-148. From SHIVE to CWARD on SLI R-148. From CWARD to BAYER on SLI R-148. From BAYER to MADOW on SLI R-148. From MADOW to TOZEK on SLI R-148. From TOZEK to SLI VORTAC on SLI R-148. Expect RADAR vectors to final approach course for Runways 24 or 25.



SOCAL APP CON  
128.1 281.4  
D-ATIS ARR  
133.8



SEAL BEACH  
115.7 SU  
Chan 104



# VISTA THREE ARRIVAL

NOTE: DME and RADAR required.  
NOTE: Chart not to scale.

SW-3, 16 APR 2026 to 14 MAY 2026