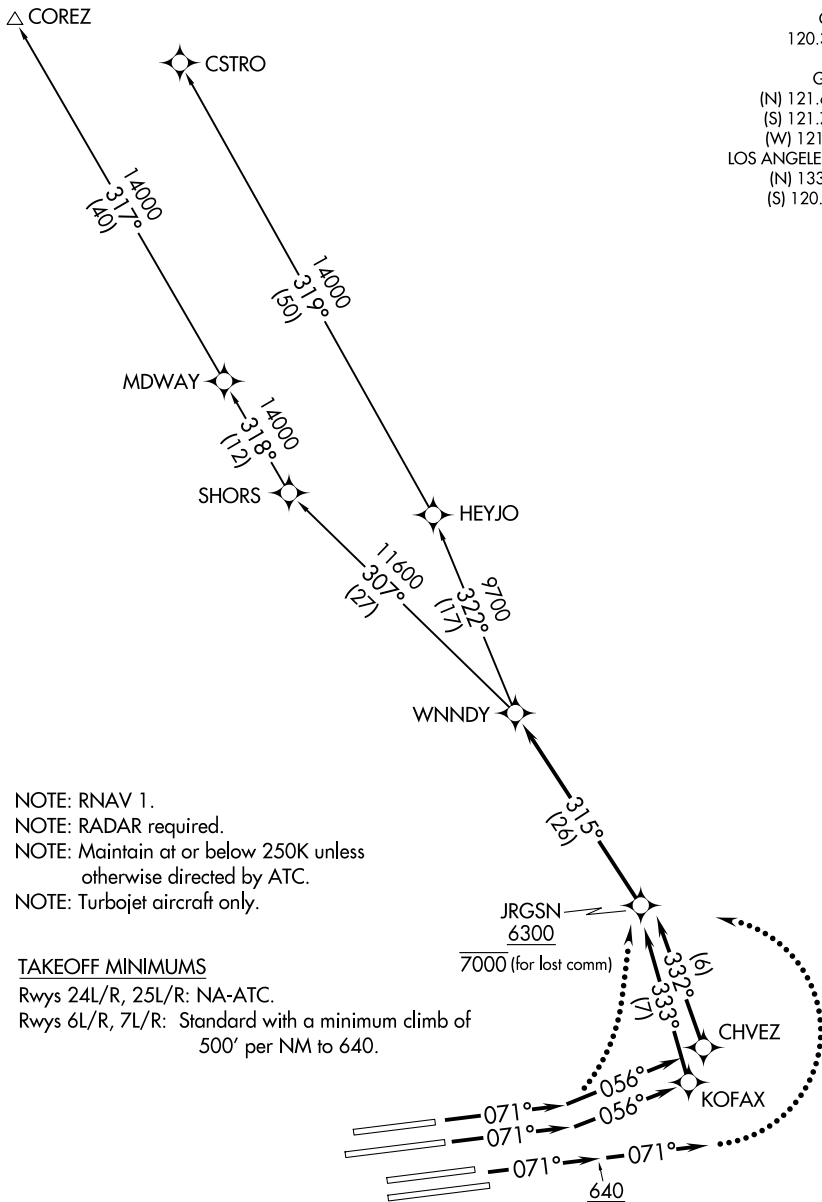


**TOP ALTITUDE:
FL230**

SOCAL DEP CON	125.2 323.275
D-ATIS DEP	135.65
CLNC DEL	120.35 327.0
CPDLC	GND CON
GND CON	(N) 121.65 327.0
(S) 121.75 327.0	(W) 121.4 327.0
LOS ANGELES TOWER	(N) 133.9 239.3
(S) 120.95 379.1	



NOTE: RNAV 1.
 NOTE: RADAR required.
 NOTE: Maintain at or below 250K unless otherwise directed by ATC.
 NOTE: Turbojet aircraft only.

TAKEOFF MINIMUMS

Rwys 24L/R, 25L/R: NA-ATC.
 Rwys 6L/R, 7L/R: Standard with a minimum climb of 500' per NM to 640.

(CONTINUED ON FOLLOWING PAGE)

NOTE: Chart not to scale.