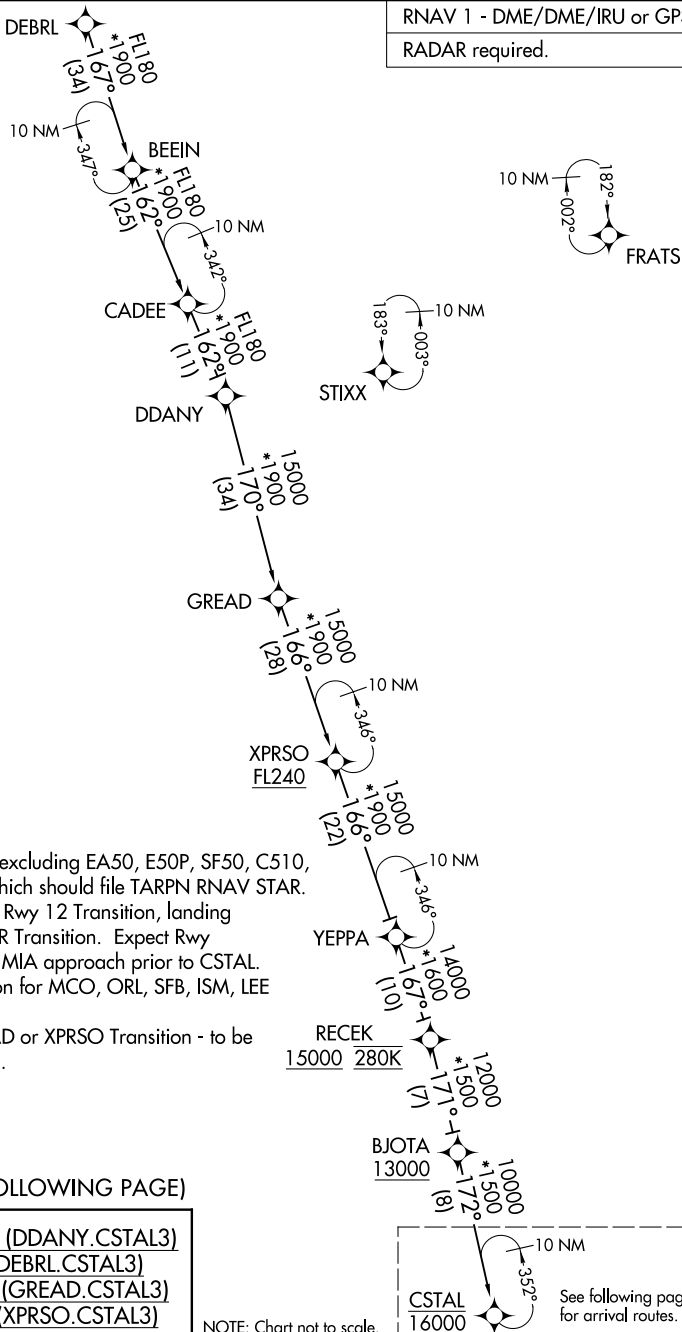


CSTAL THREE ARRIVAL (RNAV) Transition Routes

MIAMI, FLORIDA

MIAMI APP CON
 124.85 263.025
 KHST ATIS*
 132.275 269.9
 MIA D-ATIS
 119.15
 TMB ATIS
 124.0

RNAV 1 - DME/DME/IRU or GPS.
 RADAR required.



NOTE: Jet aircraft only, excluding EA50, E50P, SF50, C510, C525 aircraft, which should file TARPIN RNAV STAR.

NOTE: Landing east use Rwy 12 Transition, landing west use Rwy 26R Transition. Expect Rwy assignment from MIA approach prior to CSTAL.

NOTE: DDANY Transition for MCO, ORL, SFB, ISM, LEE Departures only.

NOTE: Do not file GREAD or XPRSO Transition - to be assigned by ATC.

(CONTINUED ON FOLLOWING PAGE)

DDANY TRANSITION (DDANY.CSTAL3)
 DEBRL TRANSITION (DEBRL.CSTAL3)
 GREAD TRANSITION (GREAD.CSTAL3)
 XPRSO TRANSITION (XPRSO.CSTAL3)

NOTE: Chart not to scale.

See following page for arrival routes.

SE-3, 16 APR 2026 to 14 MAY 2026

SE-3, 16 APR 2026 to 14 MAY 2026

CSTAL THREE ARRIVAL (RNAV) Transition Routes

MIAMI, FLORIDA