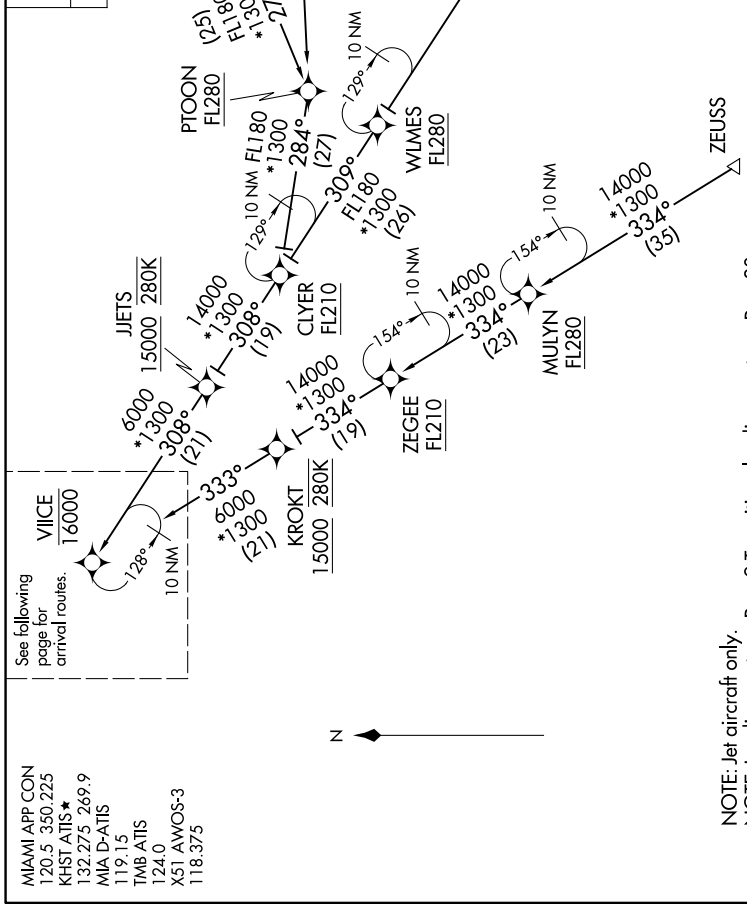


VIICE TWO ARRIVAL (RNAV) Transition Routes

MIAMI, FLORIDA

SE-3, 16 APR 2026 to 14 MAY 2026

RNAV 1 - DME/DME/IRU or GPS.  
 ZEUSS, MADIZ, ZQA, NICKO TRANSITION: GPS  
 RADAR required.



MADIZ TRANSITION (MADIZ.VIICE2)  
 NASSAU TRANSITION (ZQA.VIICE2)  
 NICKO TRANSITION (NICKO.VIICE2)  
 PTOON TRANSITION (PTOON.VIICE2)  
 ZEGEE TRANSITION (ZEGEE.VIICE2)  
 ZEUSS TRANSITION (ZEUSS.VIICE2)

See following page for arrival routes.

MIAMI APP CON  
 120.5 350.225  
 KHST ATIS \*  
 132.275 269.9  
 MIA D-ATIS  
 119.15  
 TMB ATIS  
 124.0  
 X51 AWOS-3  
 118.375

NOTE: Jet aircraft only.  
 NOTE: Landing east use Rwy 9 Transition, landing west use Rwy 30 Transition. Expect Rwy assignment from MIA approach prior to VIICE.  
 NOTE: Do not file PTOON or ZEGEE Transition - to be assigned by ATC.

(CONTINUED ON FOLLOWING PAGE)

NOTE: Chart not to scale.

SE-3, 16 APR 2026 to 14 MAY 2026

VIICE TWO ARRIVAL (RNAV) Transition Routes

MIAMI, FLORIDA