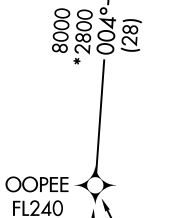
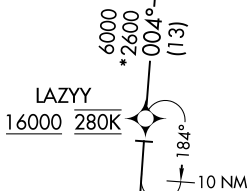


BLUEM FIVE ARRIVAL (RNAV) Transition Routes

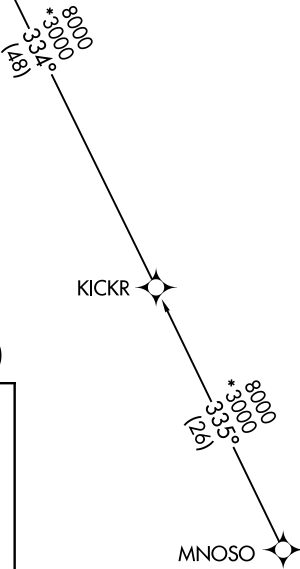
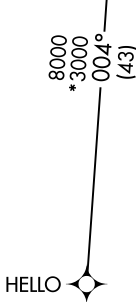
MINNEAPOLIS APP CON  
135.475 335.5  
D-ATIS  
135.35 239.275

BLUEM  
10000 280K  
See following page for Arrival Routes.

RNAV 1 - DME/DME/IRU or GPS.  
RADAR required.



NOTE: Jet aircraft only.  
 NOTE: Expect "descend via" clearance and runway transition assignment by Center. Approach will assign landing runway.  
 NOTE: HELLO Transition: do not file, to be assigned by ATC.  
 NOTE: Jet aircraft descend via Mach number until 280K, if unable, advise ATC.



(CONTINUED ON FOLLOWING PAGE)

- HELLO TRANSITION (HELLO.BLUEM5)
- KICKR TRANSITION (KICKR.BLUEM5)
- LAZYY TRANSITION (LAZYY.BLUEM5)
- MNOSO TRANSITION (MNOSO.BLUEM5)
- OOPEE TRANSITION (OOPEE.BLUEM5)

NOTE: Chart note to scale.

NC-1, 16 APR 2026 to 14 MAY 2026

NC-1, 16 APR 2026 to 14 MAY 2026