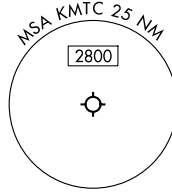


**TOP ALTITUDE:
ASSIGNED BY ATC**

RNAV 1 - DME/DME/IRU or GPS.

RADAR required.



- SELFRIDGE DEP CON★ 119.6 391.9
- ATIS 125.325 270.1
- CLNC DEL 128.3 275.8
- GND CON 128.3 275.8
- SELFRIDGE TOWER★ 120.15 225.4



TAKEOFF MINIMUMS:

- Rwy 1: Standard.
- Rwy 19: Standard with minimum climb of 235' per NM to 1500.

NOTE: Turbojet departures at/above 10000, maintain 280K until advised by ATC.

NOTE: Chart not to scale.

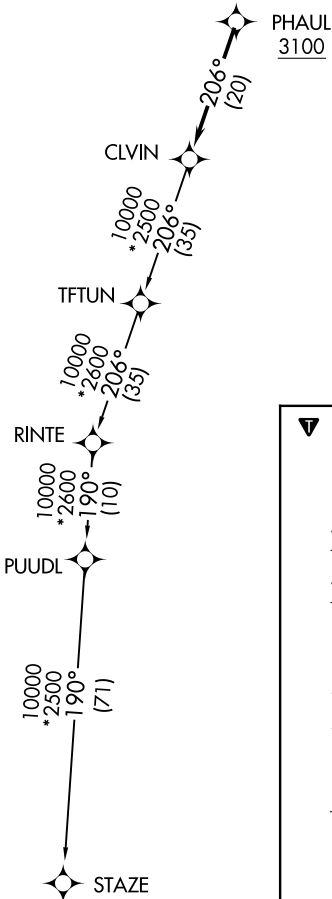
DEPARTURE ROUTE DESCRIPTION

TAKEOFF RUNWAY 1: Climb on heading 007° or as assigned by ATC, thence....

TAKEOFF RUNWAY 19: Climb on heading 187° or as assigned by ATC, thence....

....for RADAR vectors to cross PHAUL at or above 3100, then on track 206° to CLVIN, then on (transition). Maintain ATC assigned altitude, expect filed altitude 10 minutes after departure.

STAZE TRANSITION (CLVIN3.STAZE):



EC-1, 16 APR 2026 to 14 MAY 2026

EC-1, 16 APR 2026 to 14 MAY 2026