

HI-ILS or LOC Y RWY 19

LOC I-MTC 110.1	APCH CRS 187°	Rwy Idg 10,010
		TDZE 579
		Arprt Elev 580

[USAF]

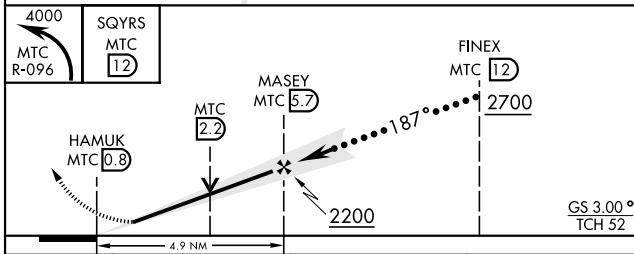
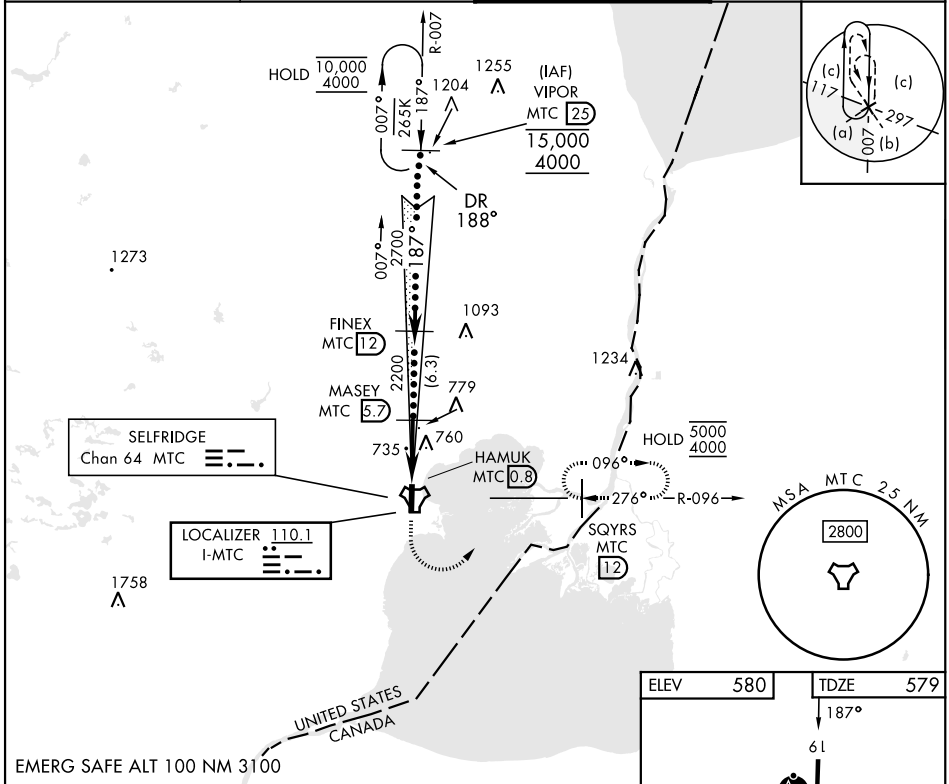
SELFRIDGE ANGB (KMTC)

▼ *When ALS inop, increase RVR to 40, vis to ¾ mile.
 **When ALS inop, increase vis to 1 ¾ miles.
 ***Circling not authorized W of Rwy 01-19.

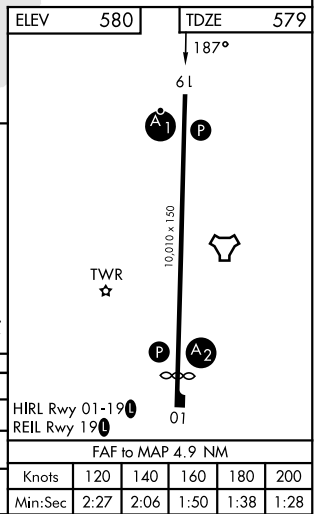


MISSED APPROACH: Climbing left turn to 4000, intercept MTC R-096 to SQYRS and hold, continue climb-in-hold to 4000.

ATIS 125.325 270.1	APP CON 119.6 318.2	TOWER★ 120.15 (CTAF) 0 225.4	GND CON 128.3 275.8
------------------------------	-------------------------------	--	-------------------------------



CATEGORY	C	D	E
S-ILS 19*	779/24	200 (200-½)	
S-LOC 19**	1060/50	481 (500-1)	
CIRCLING***	1060-1½ 480 (500-1½)	1140-2	560 (600-2)



EC-1, 16 APR 2026 to 14 MAY 2026

EC-1, 16 APR 2026 to 14 MAY 2026

HI-ILS or LOC Y RWY 19