

MT. CLEMENS, MICHIGAN

ILS or LOC Z RWY 19

LOC I-MTC 110.1	APCH CRS 187°	Rwy ldg 10,010
		TDZE 579
		Arprt Elev 580

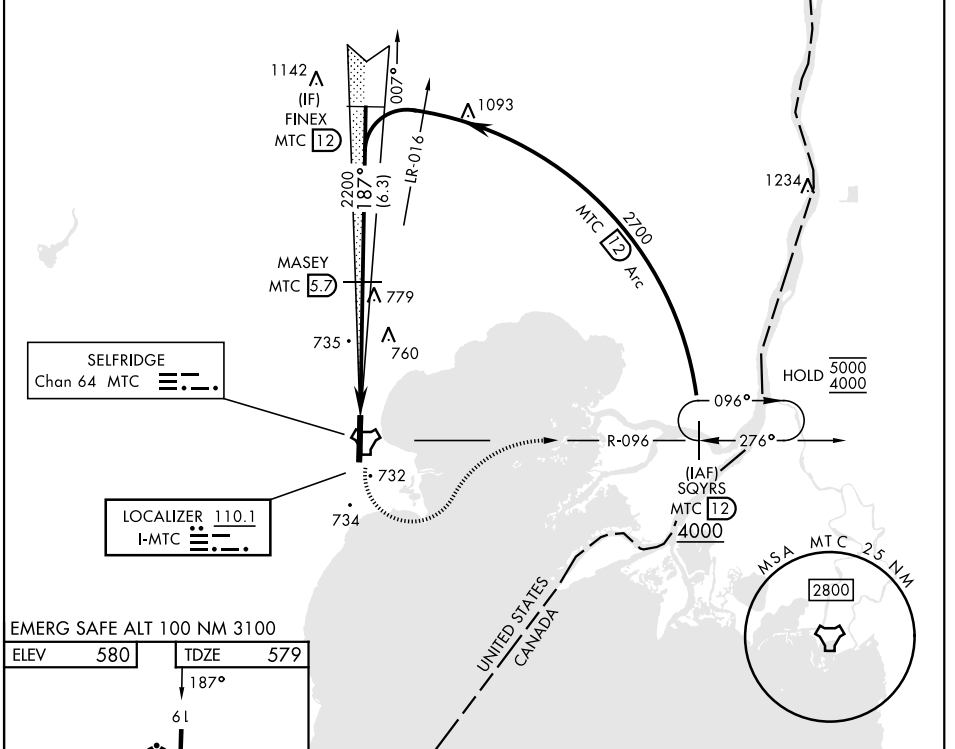
[USAF]

SELFRIDGE ANGB (KMTC)

▼ * When ALS inop, increase RVR to 40, vis to ¾ mile.
****** When ALS inop, increase CAT AB RVR to 55, vis to 1 mile, CAT CDE vis to 1¾ miles.
******* Circling not authorized W of Rwy 01-19.

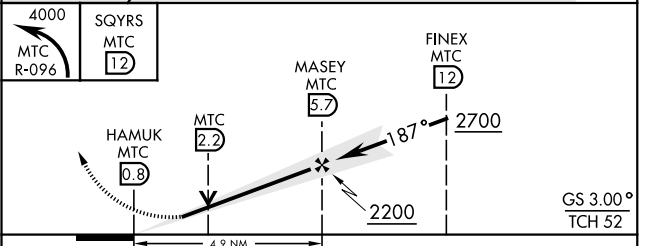
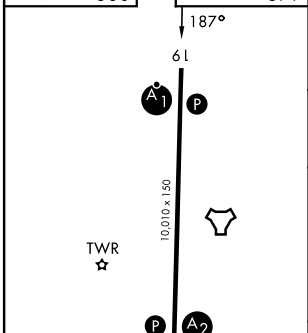
ALSF-1 MISSED APPROACH: Climbing left turn to 4000, intercept MTC R-096 to SQYRS and hold, continue climb-in-hold to 4000.

ATIS 125.325 270.1	SELFRIDGE APP CON 119.6 318.2	SELFRIDGE TOWER ★ 120.15 (CTAF) 225.4	GND CON 128.3 275.8
------------------------------	---	---	-------------------------------



EMERG SAFE ALT 100 NM 3100

ELEV	580	TDZE	579
------	-----	------	-----



CATEGORY	A	B	C	D	E
S-ILS 19*	779/24		200	(200-½)	
S-LOC 19**	1060/24	481 (500-½)	1060/50	481 (500-1)	
CIRCLING ***	1060-1 480 (500-1)		1060-1½ 480 (500-1½)	1140-2 560 (600-2)	

MT. CLEMENS, MICHIGAN

42°37'N-82°50'W

SELFRIDGE ANGB (KMTC)

Amdt 4 26DEC24

ILS or LOC Z RWY 19

EC-1, 16 APR 2026 to 14 MAY 2026

EC-1, 16 APR 2026 to 14 MAY 2026