

(KAYLN3.KAYLN) 25219

# KAYLN THREE DEPARTURE (RNAV)

AL-276 (FAA)

SELFRIDGE ANGB (KMTC)

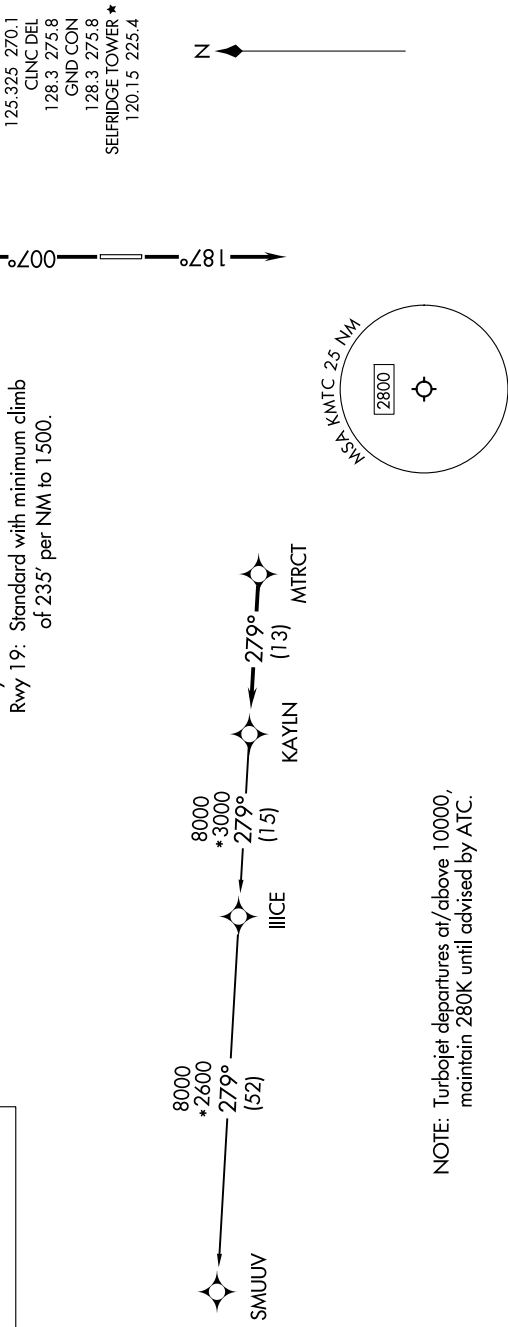
MOUNT CLEMENS, MICHIGAN

EC-1, 16 APR 2026 to 14 MAY 2026

**TOP ALTITUDE:  
ASSIGNED AT ATC**

RNAV-1 DME/DME/IRU or GPS.  
RADAR required.

**TAKEOFF MINIMUMS:**  
Rwy 1: Standard.  
Rwy 19: Standard with minimum climb of 235' per NM to 1500.



SELFRIDGE DEP CON ★  
119.6 391.9  
ATIS  
125.325 270.1  
CLINC DEL  
128.3 275.8  
GND CON  
128.3 275.8  
SELFRIDGE TOWER ★  
120.15 225.4

NOTE: Chart not to scale.

## DEPARTURE ROUTE DESCRIPTION

**TAKEOFF RUNWAY 1:** Climb on heading 007° or as assigned by ATC, thence....  
**TAKEOFF RUNWAY 19:** Climb on heading 187° or as assigned by ATC, thence....  
 ....for RADAR vectors to MTRCT, then on track 279° to KAYLN, then on (transition). Maintain ATC assigned altitude, expect filed altitude 10 minutes after departure.

**SMUUU TRANSITION [KAYLN3.SMUUU]:**

# KAYLN THREE DEPARTURE (RNAV)

(KAYLN3.KAYLN) 16MAY24

MOUNT CLEMENS, MICHIGAN  
SELFRIDGE ANGB (KMTC)

EC-1, 16 APR 2026 to 14 MAY 2026