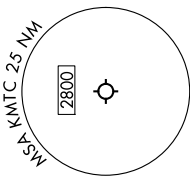


**TOP ALTITUDE:  
ASSIGNED BY ATC**



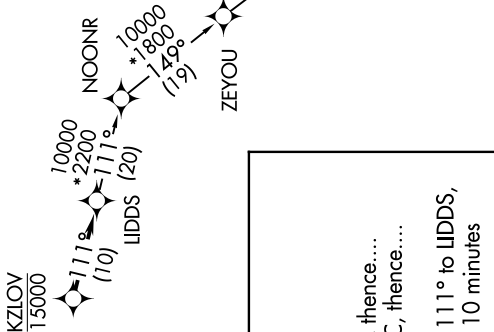
NOTE: Turbojet departures at/above 10000, maintain 280K until advised by ATC.

RNAV - DME/DME/IRU or GPS.  
 RADAR required  
 RADAR required for non-GPS equipped aircraft.

TAKEOFF MINIMUMS:

Rwy 1: Standard.  
 Rwy 19: Standard with minimum climb of 235' per NM to 1500.

SELFRIDGE DEP CON ★  
 119.6 391.9  
 ATIS  
 125.325 270.1  
 CLNC DEL  
 128.3 275.8  
 GND CON  
 128.3 275.8  
 SELFRIDGE TOWER ★  
 120.15 225.4



**DEPARTURE ROUTE DESCRIPTION**

TAKEOFF RUNWAY 1: Climb on heading 007° or as assigned by ATC, thence....  
TAKEOFF RUNWAY 19: Climb on heading 187° or as assigned by ATC, thence....  
 .... for RADAR vectors to cross KZLOV at or below 15000, then on track 111° to LIDDS, then on (transition). Maintain ATC assigned altitude, expect filed altitude 10 minutes after departure.

GRIVY TRANSITION (LIDDS4.GRIVY):

NOTE: Chart not to scale.