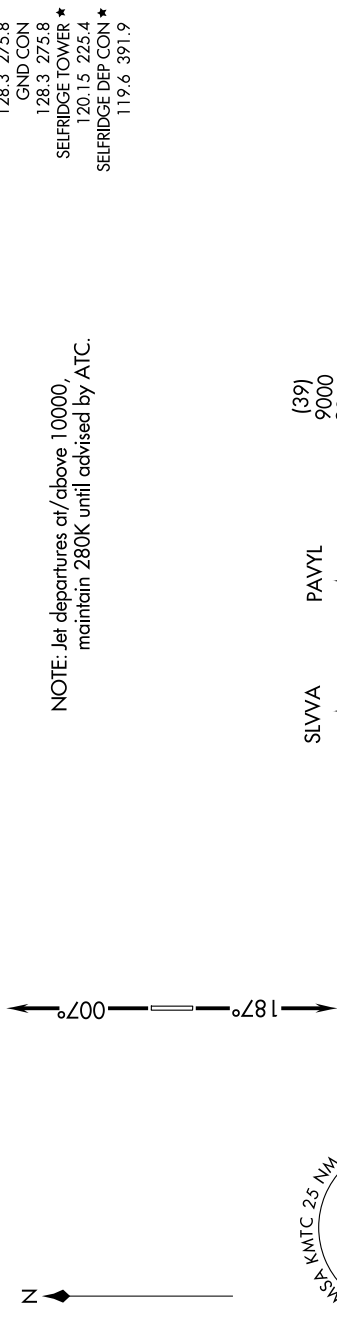
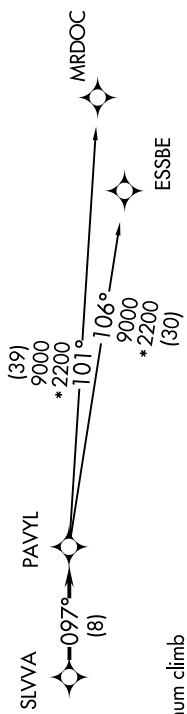


**TOP ALTITUDE:
ASSIGNED BY ATC**

RNAV 1 - DME/DME/IRU or GPS.
RADAR required.



NOTE: Jet departures at/above 10000,
maintain 280K until advised by ATC.



TAKEOFF MINIMUMS:
Rwy 1: Standard.
Rwy 19: Standard with minimum climb
of 235' per NM to 1500.

NOTE: Chart not to scale.

DEPARTURE ROUTE DESCRIPTION

TAKEOFF RUNWAY 1: Climb on heading 007° or as assigned by ATC, thence....
TAKEOFF RUNWAY 19: Climb on heading 187° or as assigned by ATC, thence....

....for RADAR vectors to SLWA, then on track 097° to PAVYL, then on (transition). Maintain 17000 or as assigned by ATC, expect filed altitude 10 minutes after departure.

ESSBE TRANSITION (PAVYL3.ESSBE):
MRDOC TRANSITION (PAVYL3.MRDOC):