

EC-1, 16 APR 2026 to 14 MAY 2026

**DEPARTURE ROUTE DESCRIPTION**

**TAKEOFF RUNWAY 1:** Climb on heading 007° or as assigned by ATC, thence....

**TAKEOFF RUNWAY 19:** Climb on heading 187° or as assigned by ATC, thence....

....for RADAR vectors to JWELS, then on track 218° to SNDRS, then on (transition). Maintain ATC assigned altitude, expect filed altitude 10 minutes after departure.

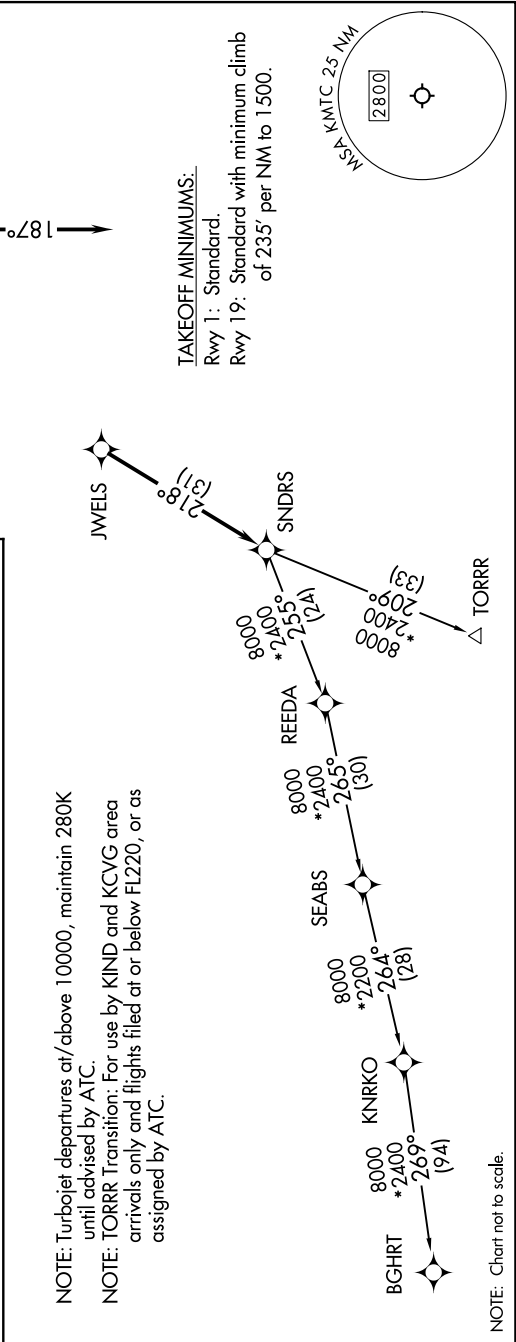
BGHT TRANSITION (SNDRS3.BGHT):  
TORR TRANSITION (SNDRS3.TORR):

**TOP ALTITUDE: ASSIGNED BY ATC**

RNAV-1 DME/DME/IRU or GPS.  
 RADAR required.

SELFDRIDGE DEP CON ★  
 119.6 391.9  
 ATIS  
 125.325 270.1  
 CLNC DEL  
 128.3 275.8  
 GND CON  
 128.3 275.8  
 SELFRIDGE TOWER ★  
 120.15 225.4

← 007°      ← 187° →



EC-1, 16 APR 2026 to 14 MAY 2026