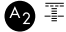


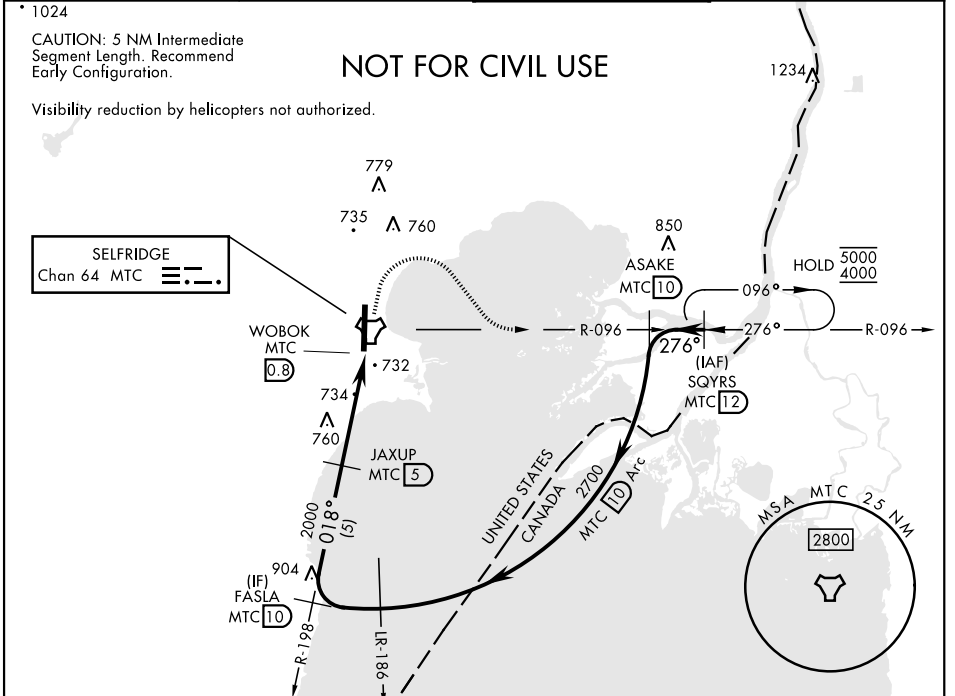
MT. CLEMENS, MICHIGAN

TACAN Z RWY 1

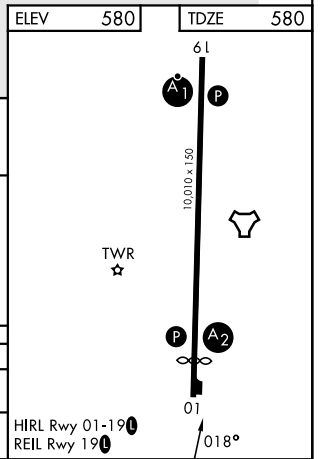
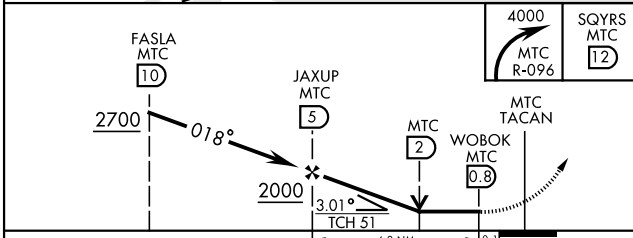
TACAN MTC Chan 64	APCH CRS 018°	Rwy Idg TDZE Arprt Elev 9001 580 580	[USAF]	SELFRIDGE ANGB (KMTC)
-----------------------------	-------------------------	--	--------	-----------------------

<p>▼ * When ALS inop, increase CAT AB RVR to 55, vis to 1 mile, CAT CDE vis to 1 3/8 miles.</p> <p>** Circling not authorized W of Rwy 01-19.</p>	<p>SALS</p> 	<p>MISSED APPROACH: Climbing right turn to 4000, intercept MTC R-096 to SQYRS and hold, continue to climb-in-hold to 4000.</p>
---	---	--

<p>ATIS</p> <p>125.325 270.1</p>	<p>APP CON</p> <p>119.6 318.2</p>	<p>TOWER★</p> <p>120.15 (CTAF) 225.4</p>	<p>GND CON</p> <p>128.3 275.8</p>
---	--	---	--



ELEV	580	TDZE	580
------	-----	------	-----



CATEGORY	A	B	C	D	E	HIRL Rwy 01-19	REL Rwy 19
S-01*	1040/40	460 (500-3/4)	1040/55	460	(500-1)		
CIRCLING**	1040-1	460 (500-1)	1040-1 1/2 460 (500-1 1/2)	1140-2	560 (600-2)		

MT. CLEMENS, MICHIGAN 42° 37' N-82° 50' W SELFRIDGE ANGB (KMTC)

Amdt 4 26DEC24

TACAN Z RWY 1

EC-1, 16 APR 2026 to 14 MAY 2026

EC-1, 16 APR 2026 to 14 MAY 2026