

# TACAN Z RWY 10

TACAN NGU Chan <b>86Y</b>	APCH CRS <b>097°</b>	Rwy ldg TDZE Arpt Elev	<b>8071</b> <b>14</b> <b>15</b>
------------------------------	-------------------------	------------------------------	---------------------------------------

[USN]

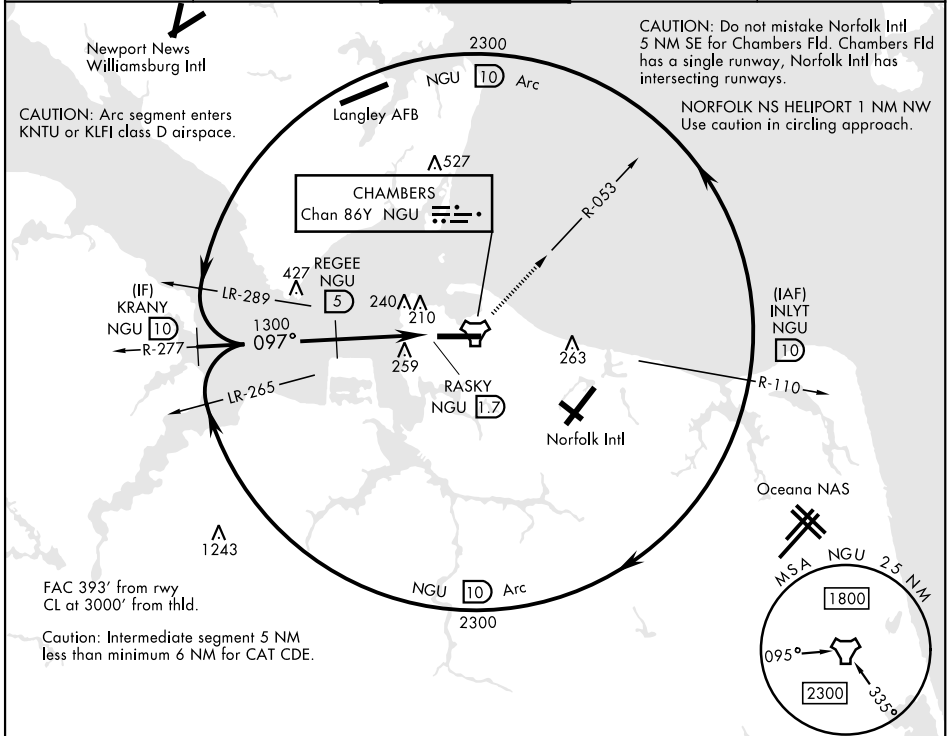
NORFOLK NS (CHAMBERS FLD) (KNGU)

RNAV or RADAR required.  
 \* When ALS inop, increase CAT AB vis to 1 mile, CAT CD vis to 1 3/8 miles.  
 \*\* Circling not authorized S of Rwy 10-28.



MISSED APPROACH: Climbing left turn to 2300 on NGU TACAN R-053 then as directed by ATC.

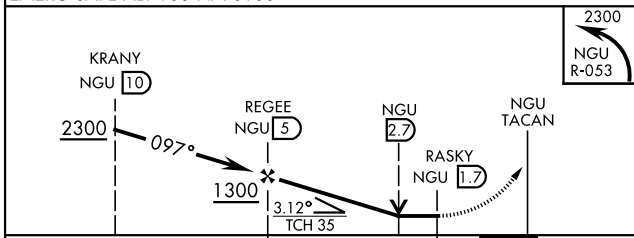
ATIS <b>118.425 338.225</b>	APP CON <b>118.9 273.475</b>	TOWER <b>124.3 379.15</b>	GND CON <b>121.8 370.85</b>	ASR/PAR
--------------------------------	---------------------------------	------------------------------	--------------------------------	---------



NE-3, 16 APR 2026 to 14 MAY 2026

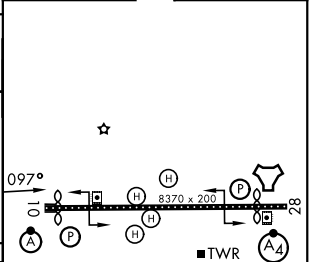
NE-3, 16 APR 2026 to 14 MAY 2026

EMERG SAFE ALT 100 NM 6100



ELEV	15	TDZE	14
------	----	------	----

CATEGORY	A	B	C	D	E
S-10 *	520-1/2	506 (600-1/2)	520-1	506 (600-1)	
CIRCLING**	520-1 505 (600-1)	540-1 525 (600-1)	540-1 1/2 525 (600-1 1/2)	600-2	585 (600-2)



HIRL Rwy 10-28  
 REIL Rwy 10, 28  
 TDZL/RCLS Rwy 10-28

# TACAN Z RWY 10