

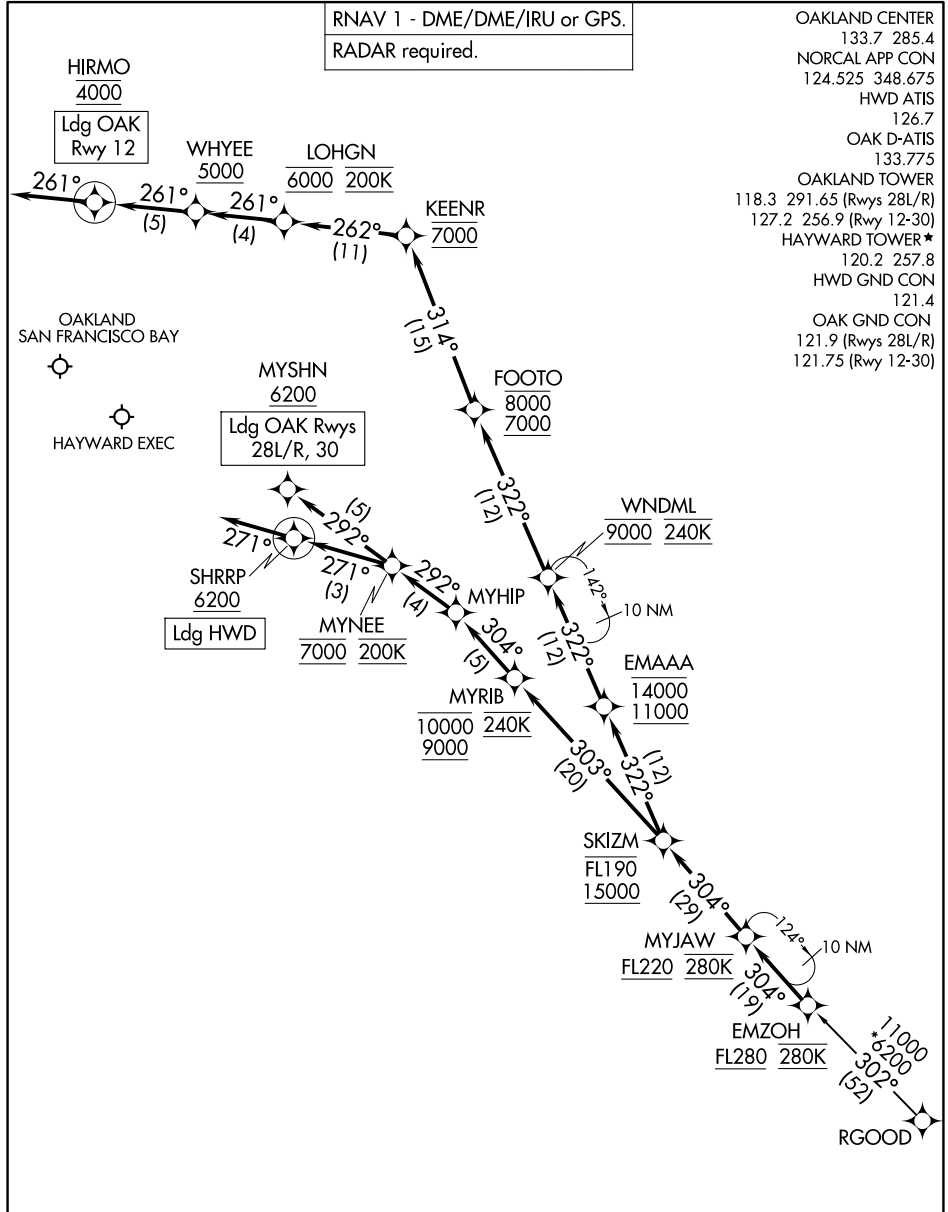
EMZOH FOUR ARRIVAL (RNAV)

AL-294 (FAA)

OAKLAND, CALIFORNIA

RNAV 1 - DME/DME/IRU or GPS.
RADAR required.

- OAKLAND CENTER 133.7 285.4
- NORCAL APP CON 124.525 348.675
- HWD ATIS 126.7
- OAK D-ATIS 133.775
- OAKLAND TOWER 118.3 291.65 (Rwys 28L/R)
- 127.2 256.9 (Rwy 12-30)
- HAYWARD TOWER* 120.2 257.8
- HWD GND CON 121.4
- OAK GND CON 121.9 (Rwys 28L/R)
- 121.75 (Rwy 12-30)



SW-2, 16 APR 2026 to 14 MAY 2026

SW-2, 16 APR 2026 to 14 MAY 2026

NOTE: Expect to receive "descend via" clearance from Oakland Center.
Northern California TRACON will assign landing runway.

(CONTINUED ON FOLLOWING PAGE)

NOTE: Chart not to scale.

EMZOH FOUR ARRIVAL (RNAV)

OAKLAND, CALIFORNIA