

NUEVO EIGHT DEPARTURE

AL-294 (FAA)

OAKLAND SAN FRANCISCO BAY (OAK)

OAKLAND, CALIFORNIA

**TOP ALTITUDE:
ASSIGNED BY ATC**

NORCAL DEP CON
135.1 307.2
D-ATIS
133.775
CLNC DEL
121.1
CPDLC
GND CON
121.9 (Rwys 28L/R)
121.75 (Rwy 30)
OAKLAND TOWER
118.3 291.65 (Rwys 28L/R)
127.2 256.9 (Rwy 30)

POINT REYES
113.7 PYE
Chan 84

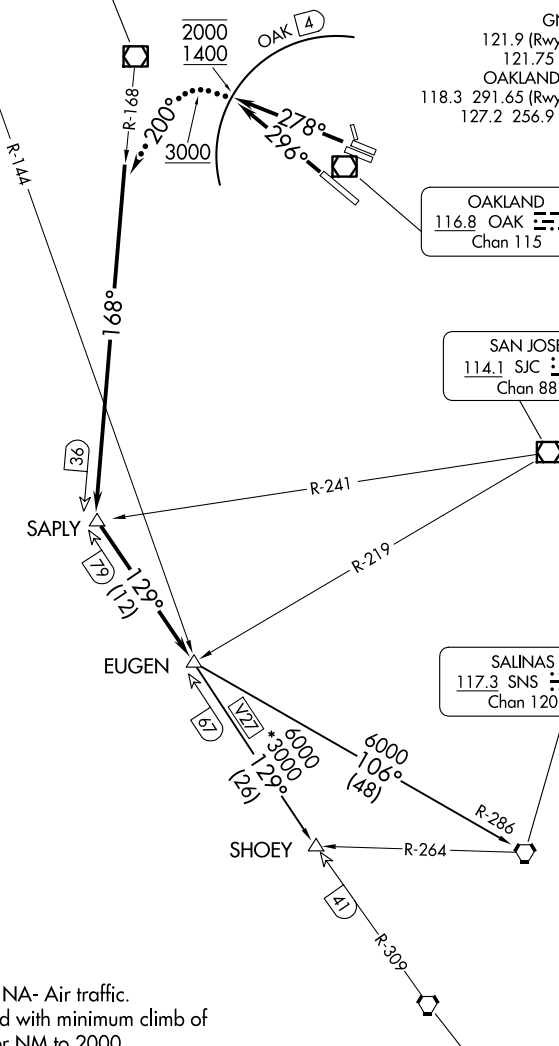
SAUSALITO
116.2 SAU
Chan 109

OAKLAND
116.8 OAK
Chan 115

SAN JOSE
114.1 SJC
Chan 88

SALINAS
117.3 SNS
Chan 120

BIG SUR
114.0 BSR
Chan 87



NOTE: RADAR required.
NOTE: DME required.

TAKEOFF MINIMUMS

Rwys 10L, 10R, 12, 15, 33: NA- Air traffic.
Rwys 28L, 28R, 30: Standard with minimum climb of
375' per NM to 2000.

NOTE: Chart not to scale.

(CONTINUED ON FOLLOWING PAGE)

NUEVO EIGHT DEPARTURE

OAKLAND, CALIFORNIA

OAKLAND SAN FRANCISCO BAY (OAK)

SW-2, 16 APR 2026 to 14 MAY 2026

SW-2, 16 APR 2026 to 14 MAY 2026