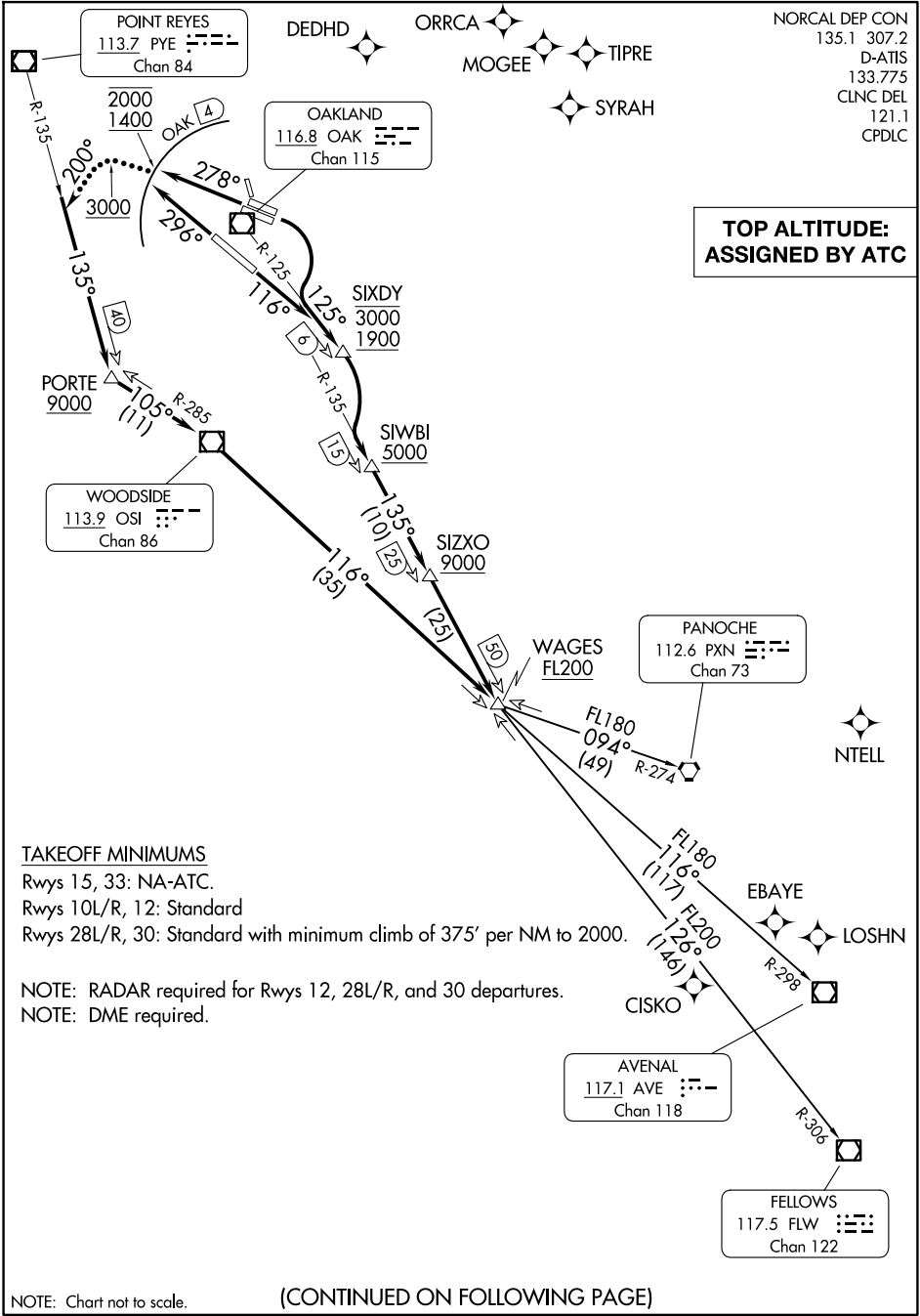


(SKYL1.WAGES) 25275
SKYLINE ONE DEPARTURE

OAKLAND SAN FRANCISCO BAY (OAK)
 OAKLAND, CALIFORNIA

AL-294 (FAA)

NORCAL DEP CON
 135.1 307.2
 D-ATIS
 133.775
 CLNC DEL
 121.1
 CPDLC



SW-2, 16 APR 2026 to 14 MAY 2026

SW-2, 16 APR 2026 to 14 MAY 2026

TAKEOFF MINIMUMS

Rwys 15, 33: NA-ATC.

Rwys 10L/R, 12: Standard

Rwys 28L/R, 30: Standard with minimum climb of 375' per NM to 2000.

NOTE: RADAR required for Rwys 12, 28L/R, and 30 departures.

NOTE: DME required.

NOTE: Chart not to scale.

(CONTINUED ON FOLLOWING PAGE)

SKYLINE ONE DEPARTURE
 (SKYL1.WAGES) 15AUG19

OAKLAND, CALIFORNIA
 OAKLAND SAN FRANCISCO BAY (OAK)