

HI-ILS Y or LOC Y RWY 32R

LOC I-PAM 110.1	APCH CRS 318°	Rwy Idg 10,008 TDZE 14 Arpt Elev 17
---------------------------	-------------------------	--

[USAF]

TYNDALL AFB (KPAM)

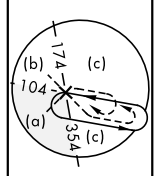
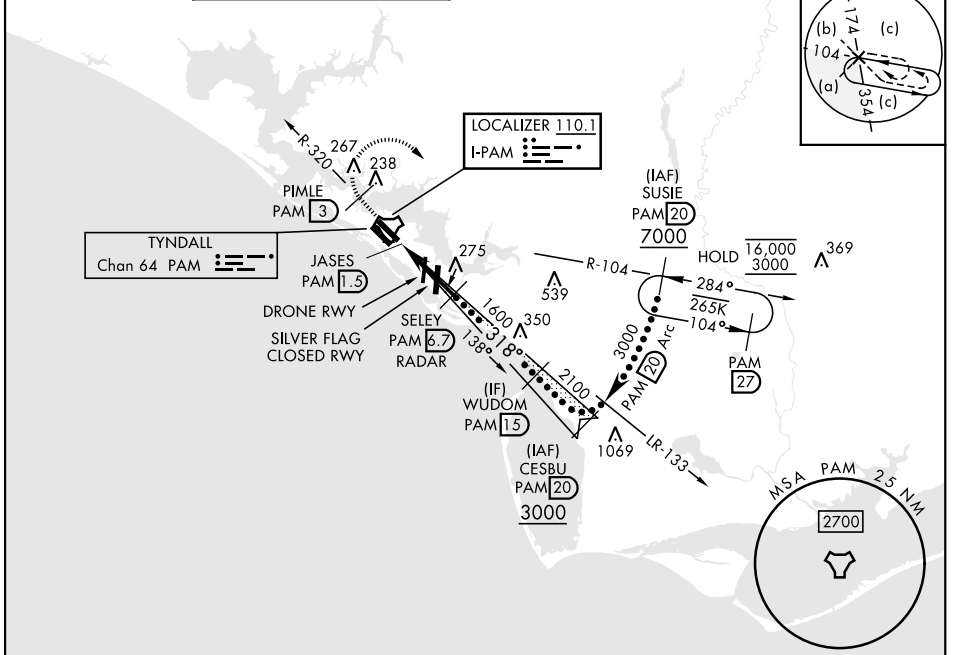
DME or RADAR required.

▼ *When ALS inop, increase RVR to 40, vis to ¾ mile.
**When ALS inop, increase RVR to 60, vis to 1½ miles.

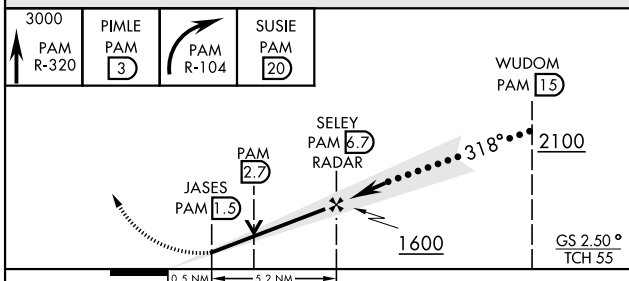


MISSED APPROACH: Track outbound PAM R-320 to 3 DME (PIMLE), then turn right to join PAM TACAN R-104 to 20 DME (SUSIE) and hold. Maintain 3000.

ATIS ★ 254.4	APP CON 125.2 392.1 (N abv 5000') 120.825 379.3 (N blw 5000') 124.15 338.35 (S abv 5000') 119.775 317.45 (S blw 5000')	TOWER ★ 133.95 263.15	GND CON 121.9 259.3	ASR/PAR
------------------------	--	---------------------------------	-------------------------------	---------



EMERG SAFE ALT 100 NM 3300



ELEV 17	TDZE 14
---------	---------

Recommend Rwy 14L-32R for apch end engagement of A-Gear.

HIRL all rwys

FAF to MAP 5.2 NM

Knots	120	140	160	180	200
Min:Sec	2:36	2:14	1:57	1:44	1:34

HI-ILS Y or LOC Y RWY 32R

SE-3, 16 APR 2026 to 14 MAY 2026

SE-3, 16 APR 2026 to 14 MAY 2026