

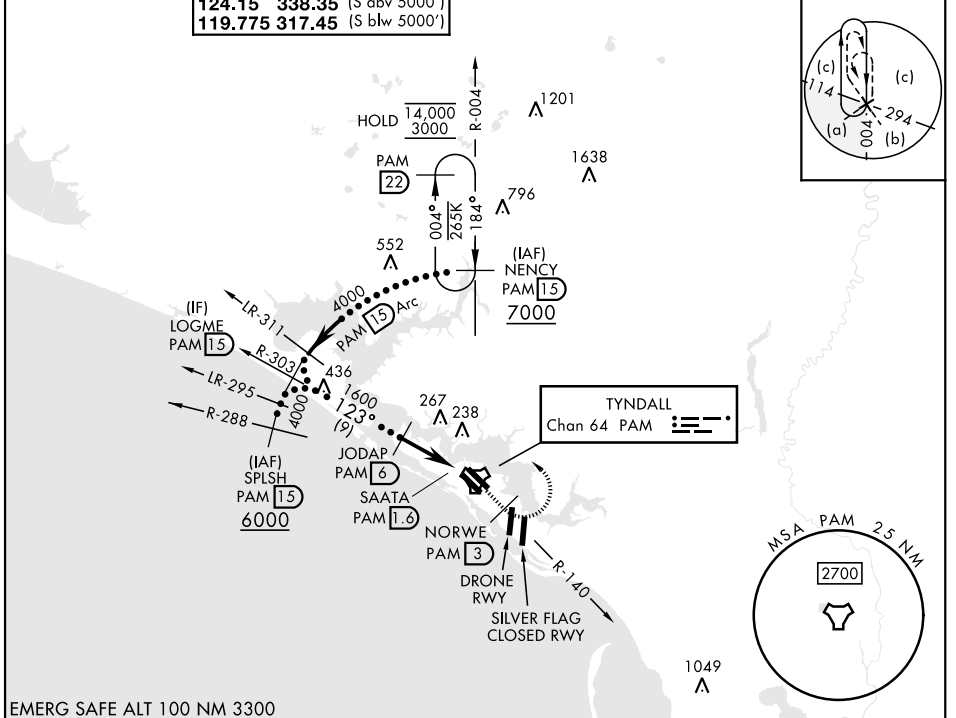
PANAMA CITY, FLORIDA

# HI-TACAN Y RWY 14R

TACAN PAM Chan <b>64</b>	APCH CRS <b>123°</b>	Rwy Idg <b>10,188</b> TDZE <b>14</b> Arprt Elev <b>17</b>	[USAF]	TYNDALL AFB (KPAM)
-----------------------------	-------------------------	---	--------	--------------------

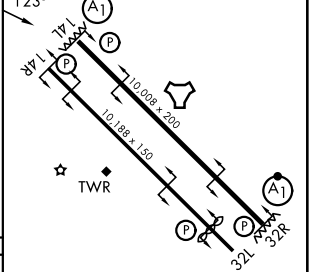
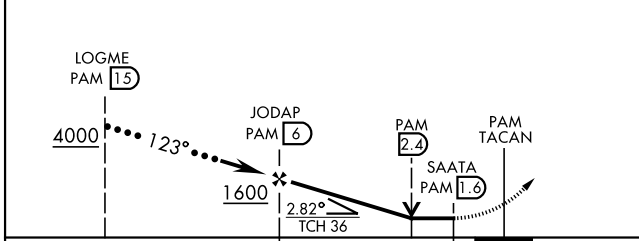
**WARNING:** Low TCH 36'. MISSED APPROACH: Track outbound PAM TACAN R-140 to 3 DME (NORWE), then turn left to join PAM R-004 to 15 DME (NENCY) and hold. Maintain 3000.

ATIS ★ <b>254.4</b>	APP CON <b>125.2 392.1</b> (N abv 5000') <b>120.825 379.3</b> (N blw 5000') <b>124.15 338.35</b> (S abv 5000') <b>119.775 317.45</b> (S blw 5000')	TOWER ★ <b>133.95 263.15</b>	GND CON <b>121.9 259.3</b>	ASR/PAR
------------------------	--	---------------------------------	-------------------------------	---------



EMERG SAFE ALT 100 NM 3300

VGSI and descent angles not coincident (VGSI Angle 2.50/TCH 36).	3000 PAM R-140	NORWE PAM 3	NENCY PAM 15	ELEV 17	TDZE 14
--	----------------	-------------	--------------	---------	---------



CATEGORY	C	D	E
S-14R	480-1 $\frac{3}{8}$	465	(500-1 $\frac{3}{8}$ )
CIRCLING	540-1 $\frac{1}{2}$ 523 (600-1 $\frac{1}{2}$ )	580-2	563 (600-2)

Recommend Rwy 14L-32R for apch end engagement of A-Gear.  
HIRL all rwys

# HI-TACAN Y RWY 14R

SE-3, 16 APR 2026 to 14 MAY 2026

SE-3, 16 APR 2026 to 14 MAY 2026