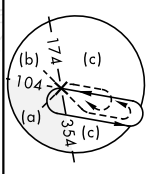


HI-TACAN Y RWY 32L

TACAN PAM Chan 64	APCH CRS 334°	Rwy Idg 9134 TDZE 17 Arpt Elev 17	[USAF]	TYNDALL AFB (KPAM)
-----------------------------	-------------------------	--	--------	--------------------

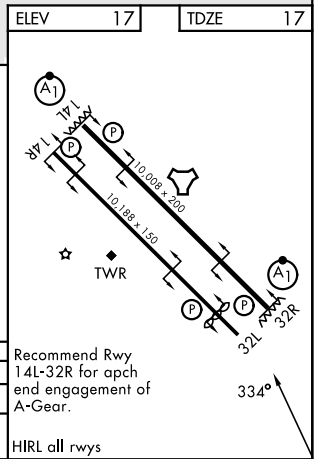
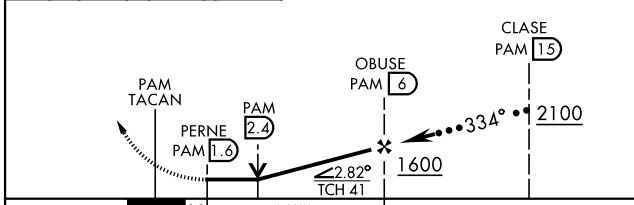
MISSED APPROACH: Track outbound PAM TACAN R-320 to 3 DME (PIMLE), then turn right to join PAM R-104 to 20 DME (SUSIE) and hold. Maintain 3000.

ATIS ★ 254.4	APP CON 125.2 392.1 (N abv 5000') 120.825 379.3 (N b/w 5000') 124.15 338.35 (S abv 5000') 119.775 317.45 (S b/w 5000')	TOWER ★ 133.95 263.15	GND CON 121.9 259.3	ASR/PAR
------------------------	--	---------------------------------	-------------------------------	---------



EMERG SAFE ALT 100 NM 3300	ELEV 17	TDZE 17
----------------------------	---------	---------

3000 PAM R-320	PIMLE PAM (3)	SUSIE PAM (20)	VGSI and descent angles not coincident (VGSI Angle 2.50/TCH 41).
----------------	---------------	----------------	--



CATEGORY	C	D	E
S-32L	540-1½	480-1¾	463 (500-1¾)
CIRCLING	523 (600-1½)	580-2	563 (600-2)

Recommend Rwy 14L-32R for apch end engagement of A-Gear.
HIRL all rwys

HI-TACAN Y RWY 32L

SE-3, 16 APR 2026 to 14 MAY 2026

SE-3, 16 APR 2026 to 14 MAY 2026