

PANAMA CITY, FLORIDA

# ILS Z or LOC Z RWY 32R

LOC I-PAM <b>110.1</b>	APCH CRS <b>318°</b>	Rwy Ldg TDZE Arpt Elev <b>10,008</b> <b>14</b> <b>17</b>
---------------------------	-------------------------	---

[USAF]

TYNDALL AFB (KPAM)

DME or RADAR required	ALSIF-1 	MISSED APPROACH: Track outbound PAM R-320 to 3 DME (PIMLE), then turn right to join PAM R-104 to 20 DME (SUSIE) and hold. Maintain 3000.
-----------------------	-------------	--

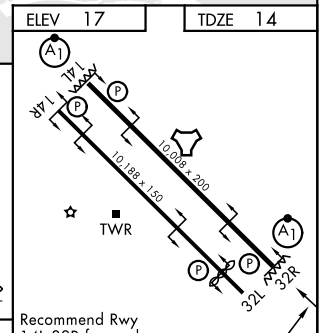
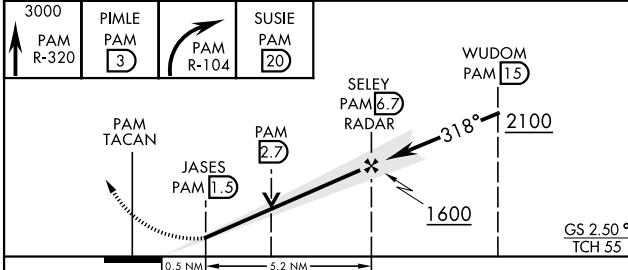
ATIS ★ <b>254.4</b>	APP CON <b>125.2 392.1</b> (N abv 5000') <b>120.825 379.3</b> (N blw 5000') <b>124.15 338.35</b> (S abv 5000') <b>119.775 317.45</b> (S blw 5000')	TOWER ★ <b>133.95 263.15</b>	GND CON <b>121.9 259.3</b>	ASR/PAR
------------------------	--	---------------------------------	-------------------------------	---------



SE-3, 16 APR 2026 to 14 MAY 2026

SE-3, 16 APR 2026 to 14 MAY 2026

EMERG SAFE ALT 100 NM 3300	ELEV 17	TDZE 14
----------------------------	---------	---------



CATEGORY	A	B	C	D	E
S-ILS 32R*	214/24		200	(200-1/2)	
S-LOC 32R**	540/24	526 (600-1/2)	540/55		526 (600-1)
CIRCLING	540-1	523 (600-1)	540-1 1/2	523 (600-1 1/2)	580-2 563 (600-2)

Recommend Rwy 14L-32R for apch end engagement of A-Gear.	HIRL all rwys				
FAF to MAP 5.3 NM					
Knots	60	90	120	150	180
Min:Sec	5:18	3:32	2:39	2:07	1:46

PANAMA CITY, FLORIDA  
Amdt 5 27NOV25

30°04'N-85°35'W

TYNDALL AFB (KPAM)

# ILS Z or LOC Z RWY 32R