

PANAMA CITY, FLORIDA

RNAV (GPS) RWY 14R

WAAS CH 71278 W 14B	APCH CRS 138°	Rwy ldg TDZE Arprt Elev	10,188 14 17
---	-------------------------	-------------------------------	---

(USAF)

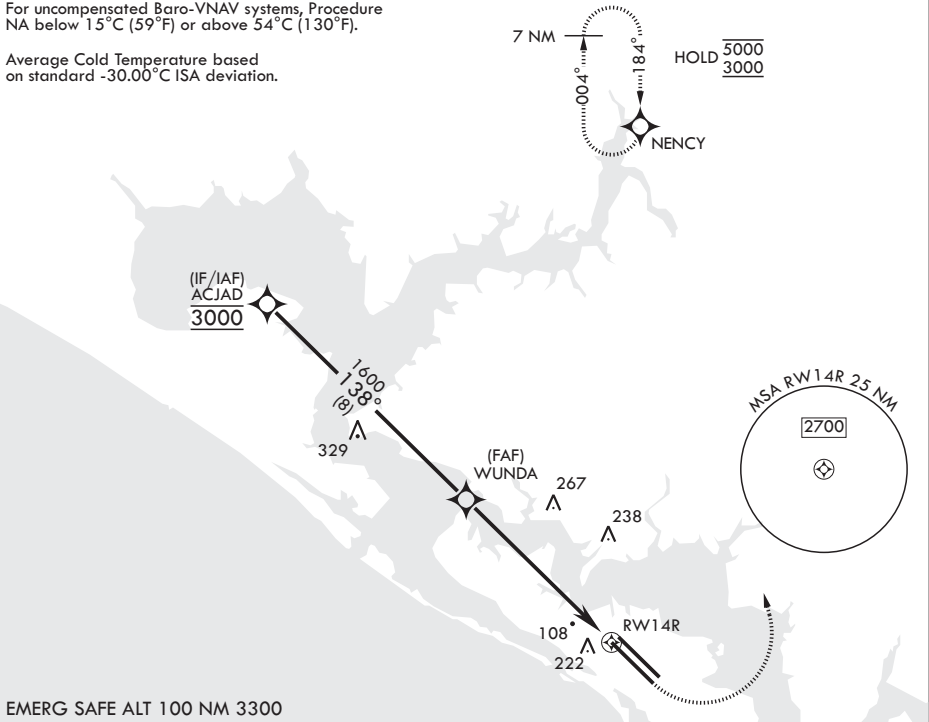
TYNDALL AFB (KPAM)

RNP APCH - GPS MISSED APPROACH: Climb to 600 then climbing left turn to 3000 direct NENCY and hold.

ATIS★ 254.4	APP CON/DEP CON★ 119.775 317.45 BLW 5000' 124.15 338.35 ABV 5000'	TOWER★ 133.95 263.15	GND CON 121.9 259.3	ASR/PAR
-----------------------	---	--------------------------------	-------------------------------	---------

For uncompensated Baro-VNAV systems, Procedure NA below 15°C (59°F) or above 54°C (130°F).

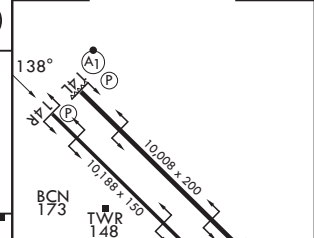
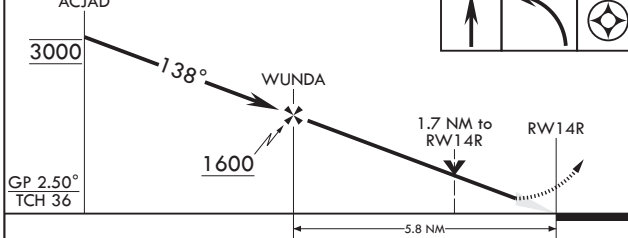
Average Cold Temperature based on standard -30.00°C ISA deviation.



SE-3, 16 APR 2026 to 14 MAY 2026

SE-3, 16 APR 2026 to 14 MAY 2026

ACJAD	600	3000	NENCY	ELEV 17	TDZE 14
-------	-----	------	-------	---------	---------



CATEGORY	A	B	C	D	E
LPV DA	215-¾		200	(200-¾)	
LNAV/VNAV DA	383-1		369	(400-1)	
LNAV MDA	500-1	486 (500-1)	500-1½	486	(500-1½)
CIRCLING	540-1	523 (600-1)	523 (600-1½)	580-2	563 (600-2)

HIRL all rwys
Recommend Rwy 14L-32R for apch end engagement of A-Gear.

PANAMA CITY, FLORIDA

30°04'N - 85°35'W

TYNDALL AFB (KPAM)

Amdt 4 27NOV25

RNAV (GPS) RWY 14R