

PANAMA CITY, FLORIDA

RNAV (GPS) RWY 32L

WAAS CH 71279 W32B	APCH CRS 319°	Rwy ldg TDZE Arprt Elev	9134 17 17
--------------------------	------------------	-------------------------------	------------------

(USAF)

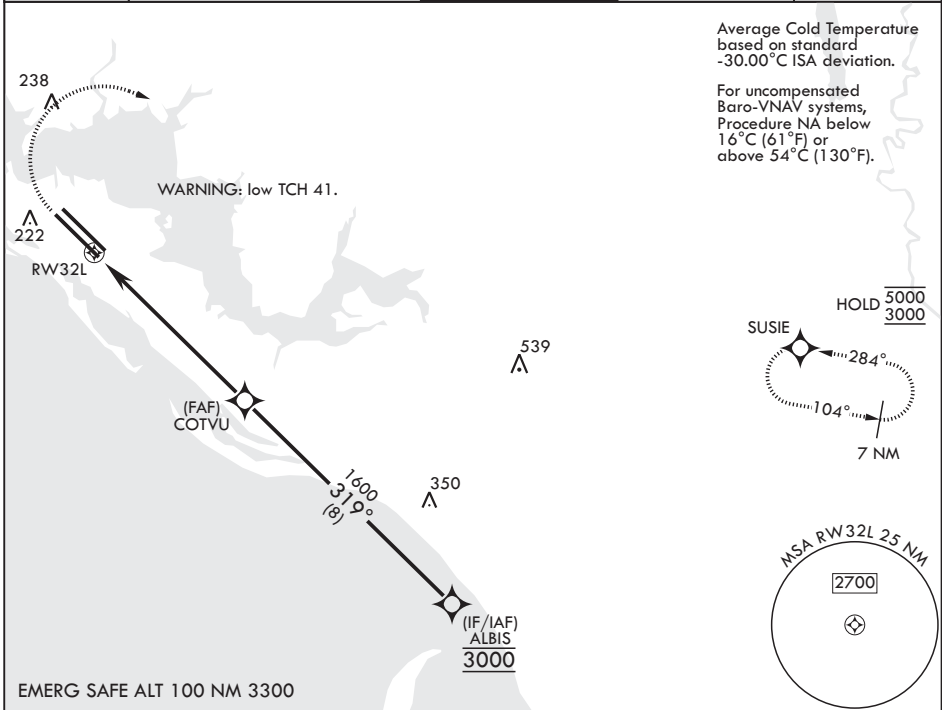
TYNDALL AFB (KPAM)

RNP APCH-GPS MISSED APPROACH: Climb to 600 then climbing right turn to 3000 direct SUSIE and hold.

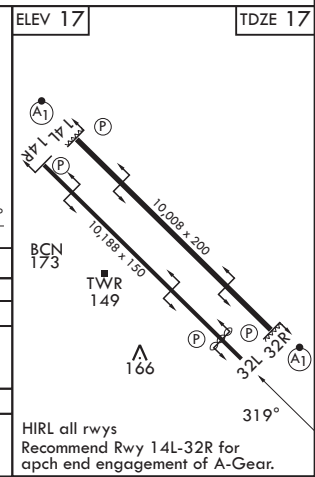
ATIS ★ 254.4	APP CON/DEP CON★ 119.775 317.45 BLW 5000' 124.15 338.35 ABV 5000'	TOWER ★ 133.95 263.15	GND CON 121.9 259.3	ASR/PAR
-----------------	---	--------------------------	------------------------	---------

Average Cold Temperature based on standard -30.00°C ISA deviation.

For uncompensated Baro-VNAV systems, Procedure NA below 16°C (61°F) or above 54°C (130°F).



600	3000	SUSIE	ALBIS		
↑	↷	⊕	3000		
RW32L		1.6 NM to RW32L	COTVU		
↖		↖	↖		
5.8 NM		1600	319°		
		GP 2.50°	TCH 41		
CATEGORY	A	B	C	D	E
LPV DA	217-3/4		200	(200-3/4)	
LNAV/VNAV DA	333-7/8 316 (400-7/8)	344-1 327 (400-1)	352-1 335 (400-1)	363-1	346 (400-1)
LNAV MDA	480-1	463 (500-1)	480-1 1/2	463	(500-1 1/2)
CIRCLING	540-1	523 (600-1)	540-1 1/2 523 (600-1 1/2)	580-2	563 (600-2)



PANAMA CITY, FLORIDA

30°04'N - 85°35'W

TYNDALL AFB (KPAM)

Amdt 4 19FEB26

RNAV (GPS) RWY 32L

SE-3, 16 APR 2026 to 14 MAY 2026

SE-3, 16 APR 2026 to 14 MAY 2026