

PANAMA CITY, FLORIDA

RNAV (GPS) RWY 32R

WAAS CH 52209 W32A	APCH CRS 319°	Rwy ldg TDZE Arprt Elev	10,008 14 17
--------------------------	------------------	-------------------------------	--------------------

(USAF)

TYNDALL AFB (KPM)

RNP APCH - GPS

▼ * When ALS inop, increase RVR to 40, vis to 3/4 mile.
 ** When ALS inop, increase RVR to 55, vis to 1 mile.
 *** When ALS inop, increase CAT AB RVR to 55, vis to 1 mile, CAT CDE vis to 1 3/8 miles.

ALSF-1



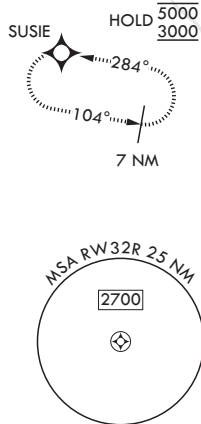
MISSED APPROACH: Climb to 600 then climbing right turn to 3000 direct SUSIE and hold.

ATIS★ 254.4	APP CON/DEP CON★ 119.775 317.45 BLW 5000' 124.15 338.35 ABV 5000'	TOWER★ 133.95 263.15	GND CON 121.9 259.3	ASR/PAR
----------------	---	-------------------------	------------------------	---------



For uncompensated Baro-VNAV systems, Procedure NA below 15°C (59°F) or above 54°C (130°F).

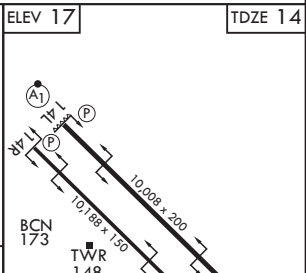
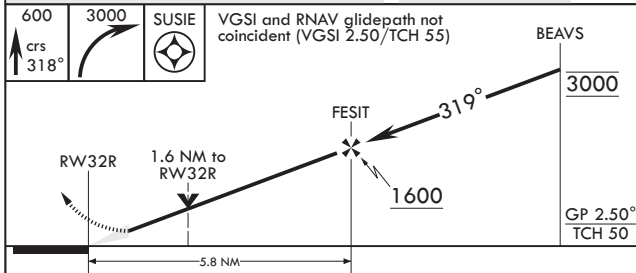
Average Cold Temperature based on standard -30.00°C ISA deviation.



SE-3, 16 APR 2026 to 14 MAY 2026

SE-3, 16 APR 2026 to 14 MAY 2026

EMERG SAFE ALT 100 NM 3300



CATEGORY	A	B	C	D	E
LPV DA*	214/24		200	(200-½)	
LNAV/VNAV DA**	362/30		348	(400-¾)	
LNAV MDA***	480/24	466 (500-½)	480/50	466	(500-1)
CIRCLING	540-1	523 (600-1)	540-1½ 523 (600-1½)	580-2	563 (600-2)

ELEV 17	TDZE 14
---------	---------

HIRL all rwys
 Recommend Rwy 14L-32R for
 apch end engagement of A-Gear

PANAMA CITY, FLORIDA

30°04'N - 85°35'W

TYNDALL AFB (KPM)

Amdt 4 27NOV25

RNAV (GPS) RWY 32R