

PANAMA CITY, FLORIDA

TACAN Z RWY 14L

TACAN PAM Chan 64	APCH CRS 130°	Rwy Idg 10,008 TDZE 14 Arpt Elev 17
-----------------------------	-------------------------	--

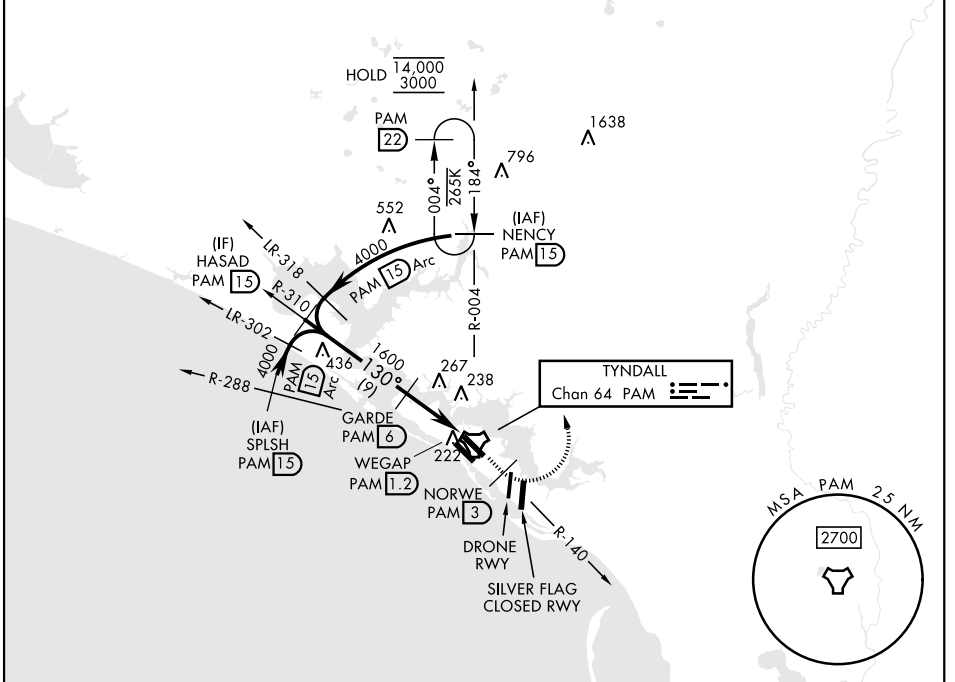
[USAF]

TYNDALL AFB (KPAM)

▲ * When ALS inop, increase CAT AB RVR to 55 and vis to 1 mile, CAT CDE vis to 1½ miles.

ALSF-1  MISSED APPROACH: Track outbound PAM TACAN R-140 to 3 DME (NORWE), then turn left to join PAM R-004 to 15 DME (NENCY) and hold. Maintain 3000.

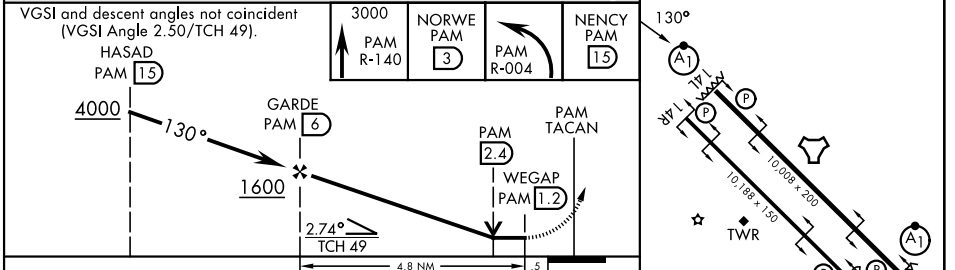
ATIS ★ 254.4	APP CON 125.2 392.1 (N abv 5000') 120.825 379.3 (N blw 5000') 124.15 338.35 (S abv 5000') 119.775 317.45 (S blw 5000')	TOWER ★ 133.95 263.15	GND CON 121.9 259.3	ASR/PAR
------------------------	--	---------------------------------	-------------------------------	---------



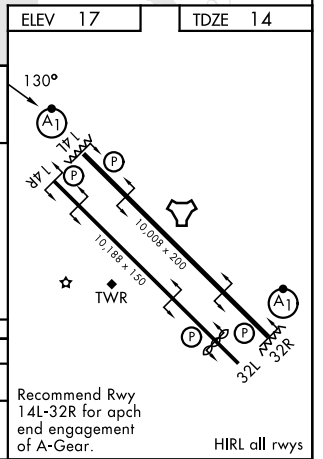
SE-3, 16 APR 2026 to 14 MAY 2026

SE-3, 16 APR 2026 to 14 MAY 2026

EMERG SAFE ALT 100 NM 3300	ELEV 17	TDZE 14
----------------------------	---------	---------



CATEGORY	A	B	C	D	E
S-14L*	500/24	486 (500-½)	500/50	486	(500-1)
CIRCLING	540-1	523 (600-1)	540-1½ 523 (600-1½)	580-2	563 (600-2)



PANAMA CITY, FLORIDA
Amdt 4 27NOV25

30°04'N-85°35'W

TYNDALL AFB (KPAM)

TACAN Z RWY 14L