

PANAMA CITY, FLORIDA

TACAN Z RWY 32R

TACAN PAM Chan 64	APCH CRS 326°	Rwy Ldg TDZE Arprt Elev 10,008 14 17
-----------------------------	-------------------------	--

[USAF]

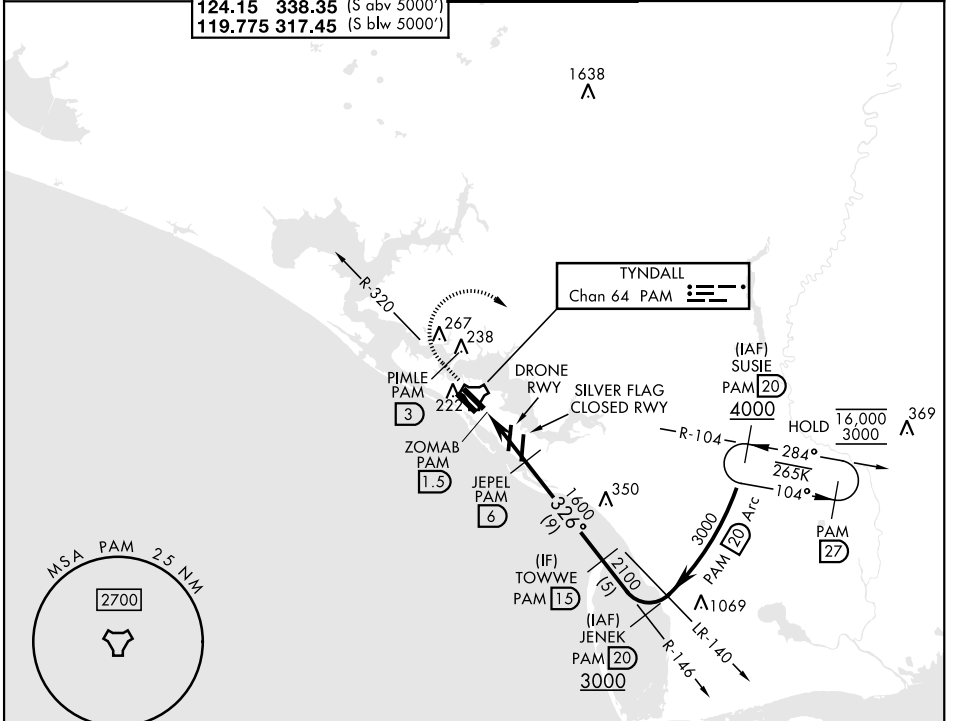
TYNDALL AFB (KPAM)

▼ *When ALS inop, increase CAT AB RVR to 55, vis to 1 mile; CAT CDE vis to 1 3/8 miles.

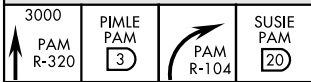


MISSED APPROACH: Track outbound PAM TACAN R-320 to 3 DME (PIMLE), then turn right to join PAM R-104 to 20 DME (SUSIE) and hold. Maintain 3000.

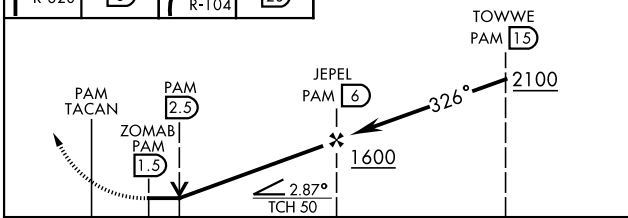
ATIS ★ 254.4	APP CON 125.2 392.1 (N abv 5000') 120.825 379.3 (N blw 5000') 124.15 338.35 (S abv 5000') 119.775 317.45 (S blw 5000')	TOWER ★ 133.95 263.15	GND CON 121.9 259.3	ASR/PAR
------------------------	--	---------------------------------	-------------------------------	---------



EMERG SAFE ALT 100 NM 3300

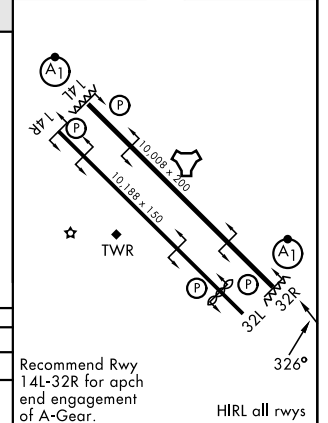


VGSI and descent angles not coincident (VGSI Angle 2.50/TCH 50).



CATEGORY	A	B	C	D	E
S-32R*	480/24	466 (500-1/2)	480/50	466 (500-1)	
CIRCLING	540-1	523 (600-1)	540-1 1/2 523 (600-1 1/2)	580-2	563 (600-2)

ELEV 17	TDZE 14
---------	---------



Recommend Rwy 14L-32R for apch end engagement of A-Gear.
HIRL all rwys

PANAMA CITY, FLORIDA
Amdt 5 27NOV25

30°04'N-85°35'W

TYNDALL AFB (KPAM)

TACAN Z RWY 32R

SE-3, 16 APR 2026 to 14 MAY 2026

SE-3, 16 APR 2026 to 14 MAY 2026