

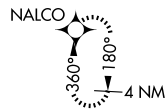
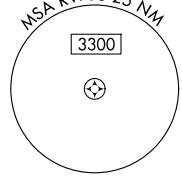
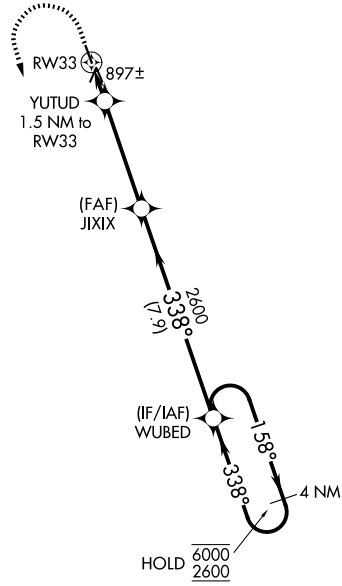
APP CRS	Rwy Ldg	<b>3798</b>
<b>338°</b>	TDZE	<b>796</b>
	Apt Elev	<b>796</b>

# RNAV (GPS) RWY 33

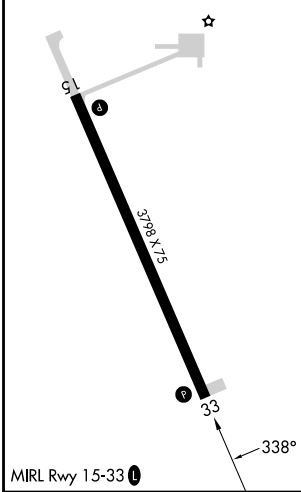
PEMBINA MUNI (PMB)

RNP APCH-GPS.		MISSED APPROACH: Climb to 1200 then climbing left turn 2600 direct NALCO and hold.
<p><b>⚠</b> NA Circling Rwy 15 NA at night. Obtain local altimeter setting on CTAF; when not received, use Hallock altimeter setting and increase all MDA 60 feet and LNAV Cat C visibility ¼ SM.</p>		

MINNEAPOLIS CENTER <b>132.15 269.6</b>	UNICOM <b>122.8 (CTAF) 0</b>
---	---------------------------------



ELEV 796	TDZE 796
----------	----------



<p>1200 ↑</p> <p>2600 ↙</p> <p>NALCO ⊙</p>	<p>VGSI and descent angles not coincident (VGSI Angle 3.00/TCH 26).</p>			
<p>YUTUD 1.5 NM to RW33</p> <p>3.00° TCH 40</p>	<p>JIXIX</p> <p>2600</p>	<p>WUBED</p> <p>4 NM Holding Pattern</p> <p>6000 2600</p>	<p>338°</p> <p>158°</p>	
<p>RW33</p> <p>1320</p> <p>1.5</p>	<p>4.1 NM</p>	<p>7.9 NM</p>		
CATEGORY	A	B	C	D
LNAV MDA	1160-1 364 (400-1)			NA
CIRCLING	1200-1 404 (500-1)	1260-1 464 (500-1)	1260-1½ 464 (500-1½)	NA

NC-1, 16 APR 2026 to 14 MAY 2026

NC-1, 16 APR 2026 to 14 MAY 2026