

LOC/DME I-PHC <b>110.95</b> Chan <b>46</b> (Y)	APP CRS <b>260°</b>	Rwy Ldg <b>7000</b> TDZE <b>113</b> Apt Elev <b>121</b>
--	------------------------	---

# LOC RWY 26

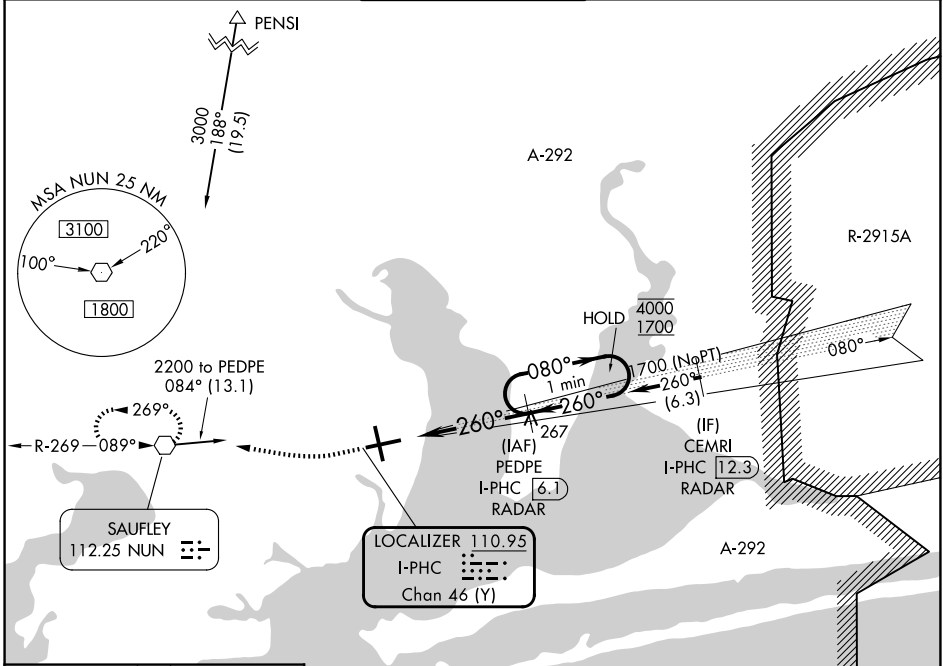
PENSACOLA INTL (PNS)

DME or RADAR required.

⚠ Rwy 26 helicopter visibility reduction below 3/4 SM NA.

MISSED APPROACH: Climb to 600 then climbing right turn to 3000 direct NUN VOR and hold, continue climb-in-hold to 3000.

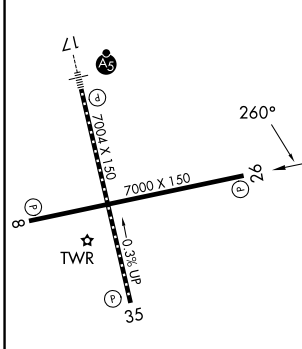
ATIS <b>121.25</b>	PENSACOLA APP CON <b>119.0 269.375</b>	PENSACOLA TOWER ★ <b>119.9</b> (CTAF) <b>257.8</b>	GND CON <b>121.9 348.6</b>	UNICOM <b>122.95</b>
-----------------------	---	---	-------------------------------	-------------------------



SE-3, 16 APR 2026 to 14 MAY 2026

SE-3, 16 APR 2026 to 14 MAY 2026

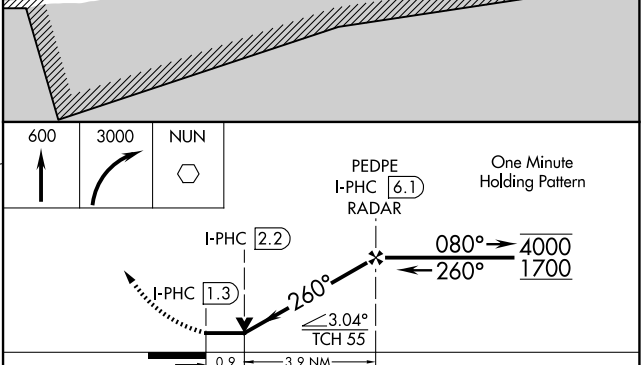
ELEV <b>121</b>	TDZE <b>113</b>
-----------------	-----------------



REIL Rws 8, 26 and 35  
TDZL/RCLS Rwy 17  
HIRL Rws 8-26 and 17-35

FAF to MAP 4.7 NM

Knots	60	90	120	150	180
Min:Sec	4:42	3:08	2:21	1:53	1:34



CATEGORY	A	B	C	D
S-26	460-1 347 (400-1)			
CIRCLING	580-1 459 (500-1)	680-1 559 (600-1)	860-2 739 (800-2)	860-2 1/4 739 (800-2 1/4)