

PAATS FOUR ARRIVAL (RNAV) Transition Routes

PHILADELPHIA, PENNSYLVANIA

PHILADELPHIA APP CON  
133.875 317.55  
MQS AWOS-3 126.25  
PHL D-ATIS ARR 133.4  
PNE ATIS 121.15  
TTN ATIS 126.775

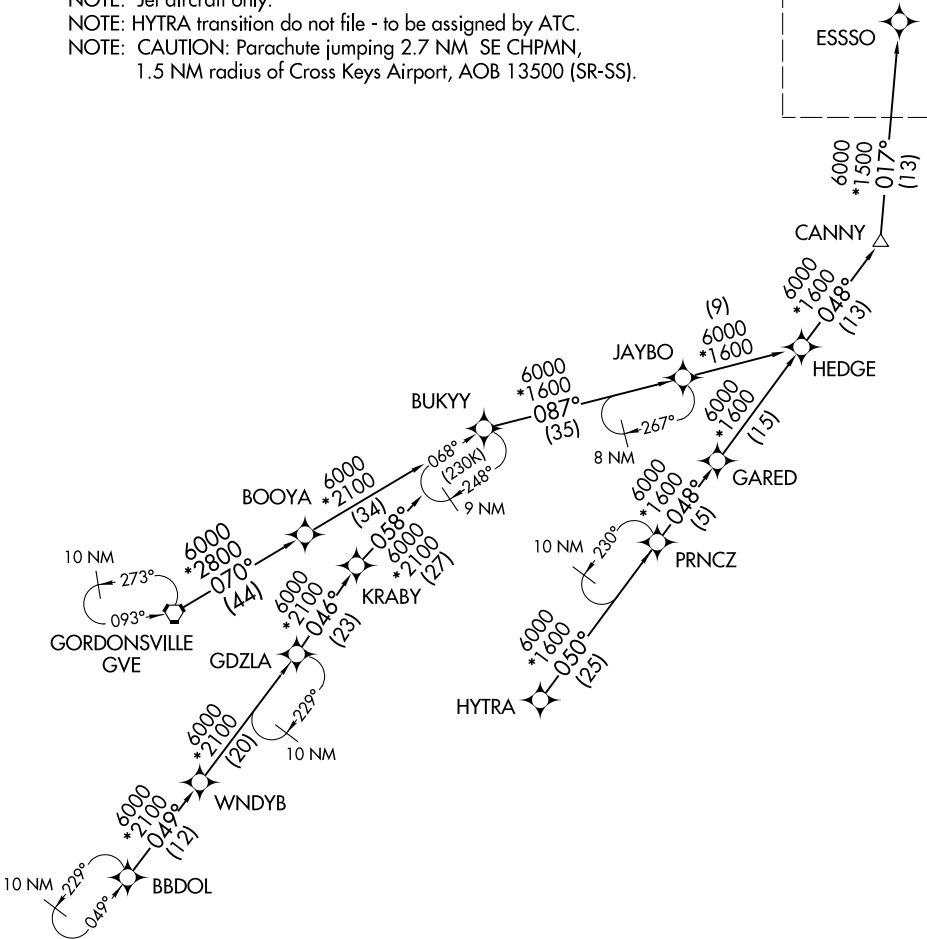
RNAV 1 - DME/DME/IRU or GPS

RADAR required

**BBDOL TRANSITION (BBDOL.PAATS4):**  
**GORDONSVILLE TRANSITION (GVE.PAATS4):**  
**HYTRA TRANSITION (HYTRA.PAATS4):**

- NOTE: Jet aircraft only.
- NOTE: HYTRA transition do not file - to be assigned by ATC.
- NOTE: CAUTION: Parachute jumping 2.7 NM SE CHPMN, 1.5 NM radius of Cross Keys Airport, AOB 13500 (SR-SS).

See following page for Arrival Routes.



NE-4, 16 APR 2026 to 14 MAY 2026

NE-4, 16 APR 2026 to 14 MAY 2026

NOTE: Chart not to scale.

(CONTINUED ON FOLLOWING PAGE)