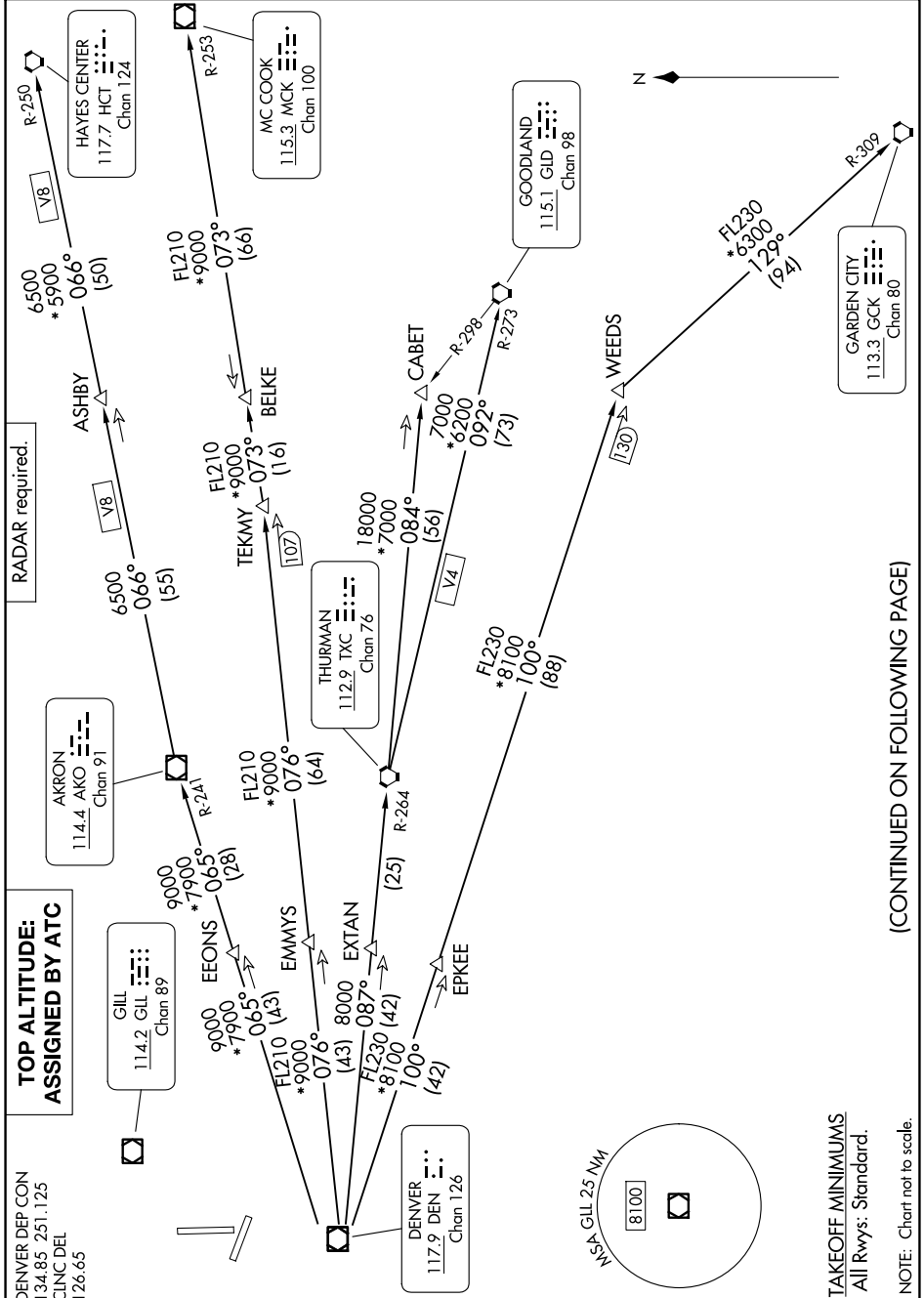


PLAINS TWO DEPARTURE

AL-325 (FAA)

GREELEY-WELD COUNTY (GXY)
GREELEY, COLORADO

SW-1, 16 APR 2026 to 14 MAY 2026



(CONTINUED ON FOLLOWING PAGE)

SW-1, 16 APR 2026 to 14 MAY 2026

PLAINS TWO DEPARTURE

GREELEY, COLORADO
GREELEY-WELD COUNTY (GXY)