

(TMBRS.TMBRS4) 26078

TMBRS FOUR ARRIVAL (RNAV) Arrival Routes

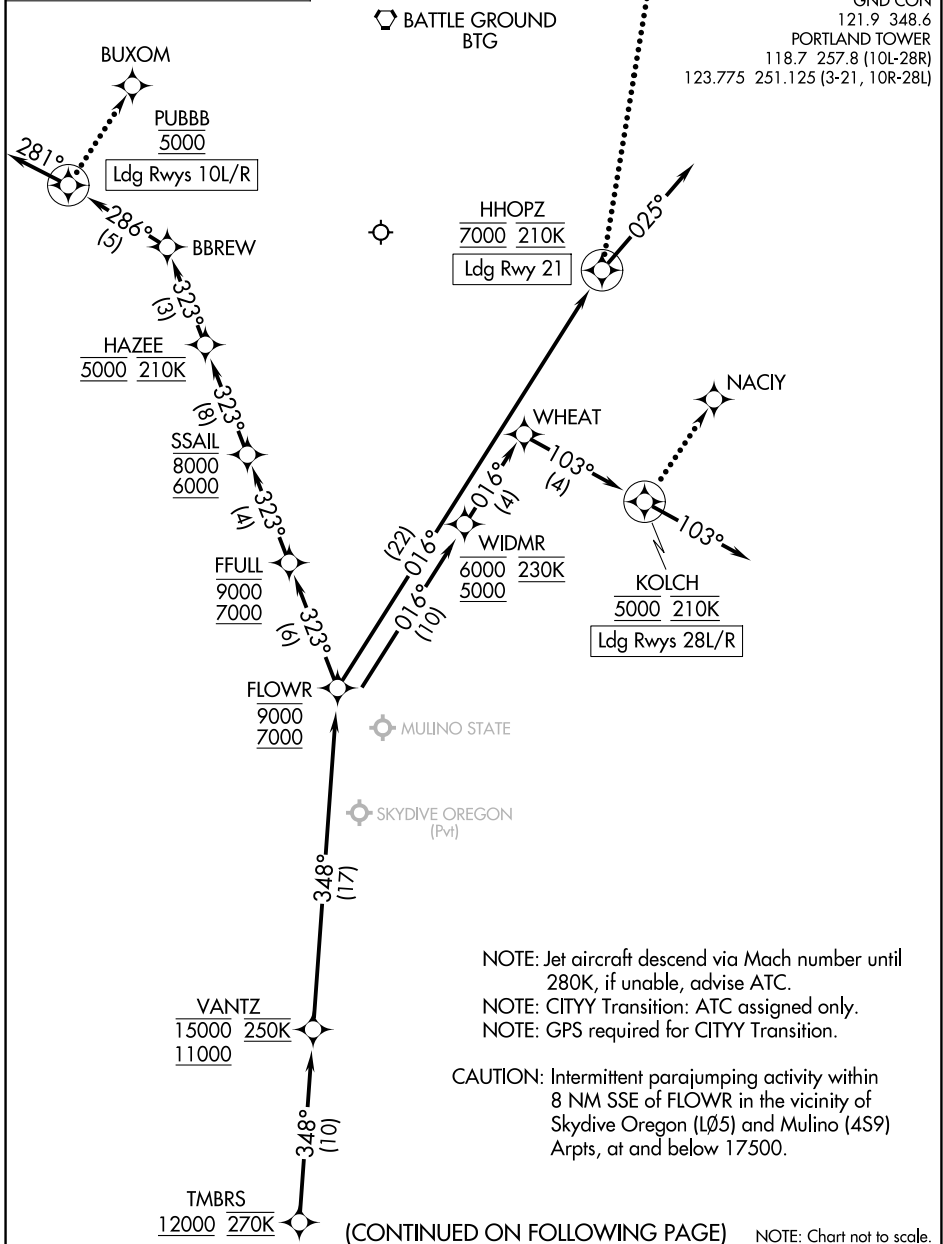
AL-330 (FAA)

PORTLAND INTL (PDX)
PORTLAND, OREGON

RNAV 1 - DME/DME/IRU or GPS.
From CITYY: RNAV 1-GPS.

RADAR required.

PORTLAND APP CON
124.35 299.2
D-ATIS
128.35 269.9
GND CON
121.9 348.6
PORTLAND TOWER
118.7 257.8 (10L-28R)
123.775 251.125 (3-21, 10R-28L)



NW-1, 16 APR 2026 to 14 MAY 2026

NW-1, 16 APR 2026 to 14 MAY 2026

NOTE: Jet aircraft descend via Mach number until 280K, if unable, advise ATC.
NOTE: CITYY Transition: ATC assigned only.
NOTE: GPS required for CITYY Transition.

CAUTION: Intermittent parajumping activity within 8 NM SSE of FLOWR in the vicinity of Skydive Oregon (LØ5) and Mulino (459) Arpts, at and below 17500.

(CONTINUED ON FOLLOWING PAGE) NOTE: Chart not to scale.

TMBRS FOUR ARRIVAL (RNAV) Arrival Routes

(TMBRS.TMBRS4) 19MAR26

PORTLAND, OREGON
PORTLAND INTL (PDX)