

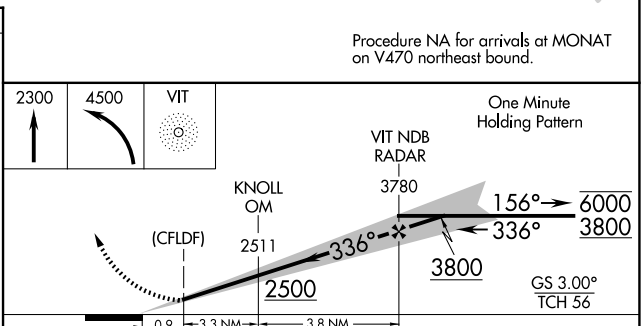
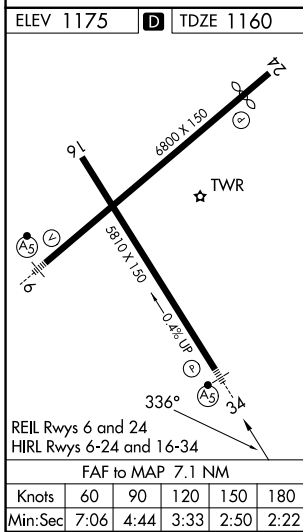
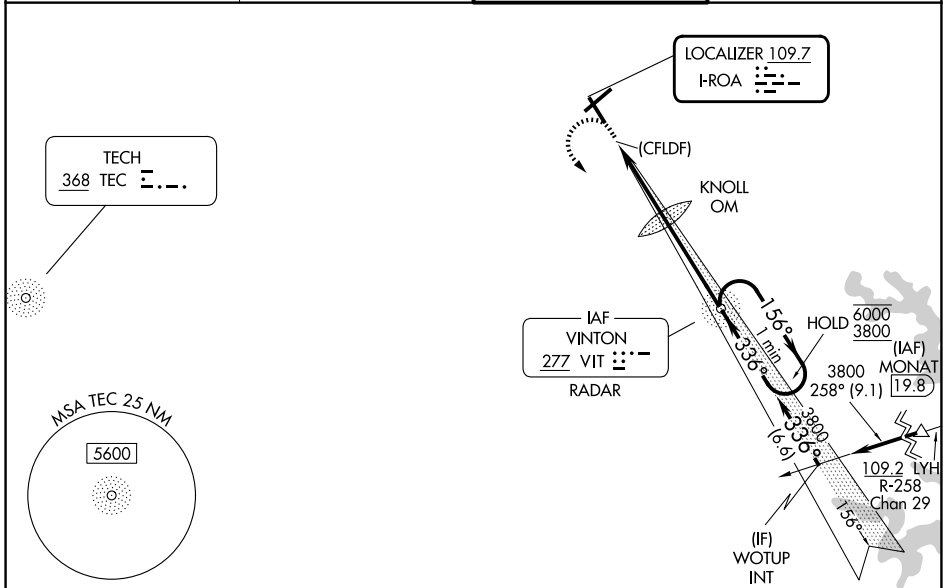
LOC I-ROA 109.7	APP CRS 336°	Rwy Ldg 5810 TDZE 1160 Apt Elev 1175
---------------------------	------------------------	---

ILS or LOC RWY 34

ROANOKE/BLACKSBURG RGNL (WOODRUM FLD) (R.O.A)

DME required for procedure entry. ADF or RADAR required.		MALSR 	MISSED APPROACH: Climb to 2300 then climbing left turn to 4500 direct VIT NDB and hold. Continue climb-in-hold to 4500. # Missed approach requires minimum climb of 425 feet perNM to 3700.
	For inop ALS, increase S-ILS 34 # all Cats to within 1 3/8 SM. Circling NA northwest of Rwy 6-24. Inop table does not apply to S-ILS 34 all Cats.		

ATIS 132.375	ROANOKE APP CON 133.225 339.8	ROANOKE TOWER 118.3 257.8	GND CON 121.9 257.8
------------------------	---	-------------------------------------	-------------------------------



CATEGORY	A	B	C	D
S-ILS 34 #		1603-7/8	443 (500-7%)	
S-ILS 34		2040-4	880 (900-4)	
S-LOC 34	2140-3/4 980 (1000-3/4)	2140-1 980 (1000-1)	2140-2 1/2 980 (1000-2 1/2)	980 (1000-2 1/2)
CIRCLING	2140-1 1/4 965 (1000-1 1/4)	2140-1 1/2 965 (1000-1 1/2)	2460-3 1285 (1300-3)	2800-3 1625 (1700-3)

NE-3, 16 APR 2026 to 14 MAY 2026

NE-3, 16 APR 2026 to 14 MAY 2026